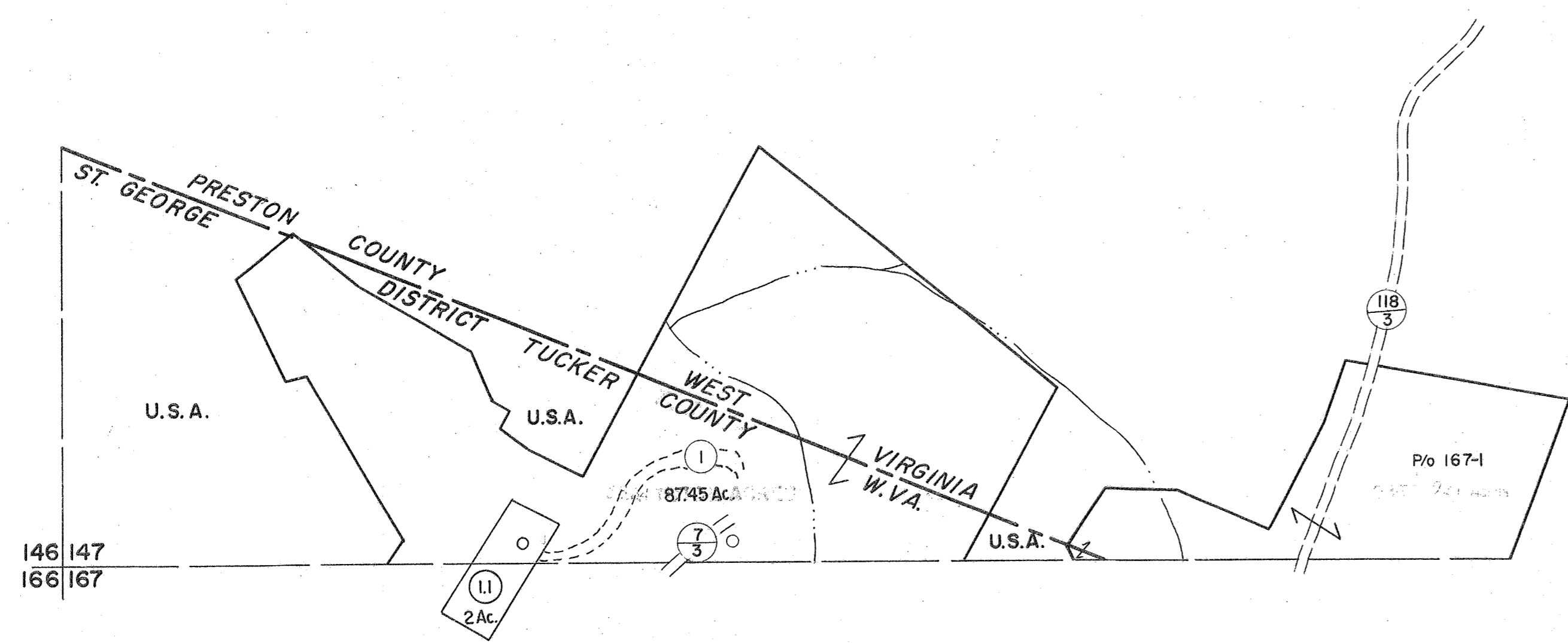
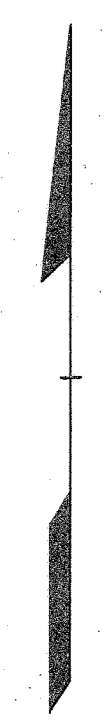


146|147

147|



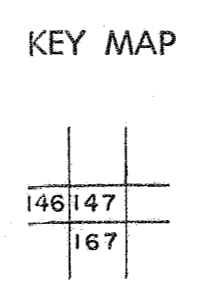
146|147
166|167

147|
167|168

For Tax Purposes Only
 Prepared by
MICHAEL BAKER, JR., INC.
 Consulting Engineers
 Rochester, Pennsylvania

Legend	
Property line	Original lot line
Edge of pavement or roadway	Deed lot number
Corporation line	Parcel or index number (S)
District line	Improvement (P)
County line	Railroad (O)

Revisions	
1	11/16/78 DG 9
2	12/30/90 DSH 10
3	H&S 2/22/04 11
4	H&S 2/22/04 12
5	
6	
7	
8	



TUCKER COUNTY
 STATE OF WEST VIRGINIA
 Office of Assessor

DISTRICT **ST. GEORGE**
SHEET NO: 147
 Date, Aerial Photography: November, 1961 Date, Map: Dec., 1962
 Photo No: Scale: 1" = 400'