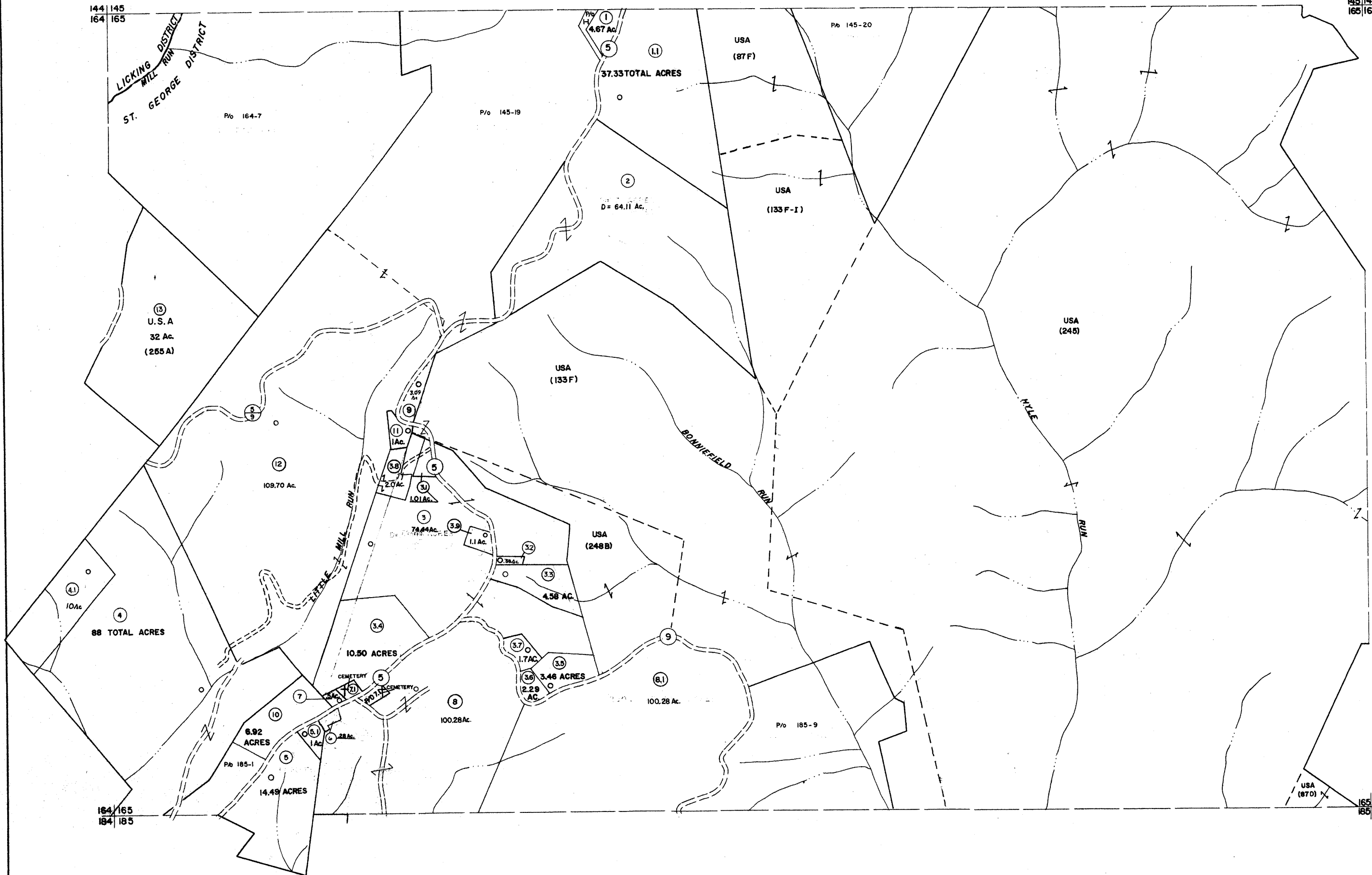


144 | 145
164 | 165

145 | 146
165 | 166



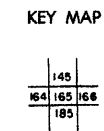
For Tax Purposes Only
 Prepared by
MICHAEL BAKER, JR., INC.
 Consulting Engineers
 Rochester, Pennsylvania

Legend

Property line	-----	Original lot line	-----
Edge of pavement or roadway	-----	Dead lot number	(15)
Corporation line	-----	Parcel or index number	(16)
District line	-----	Improvement	-----
County line	-----	Railroad	-----

Revisions

1	4-2-66	9	OGIS 1/24/93	DSH	17	5-8-10	HAS
2	4-6-75	10	OGIS 2-95	HD	18	5-4-13	HAS
3	REVISED TO 7-1-83	11	SLS INC. - DDC 5/97		19	6/26/15	SBH
4	7-1-84	12	L.E.S.		20		
5	REV TO 7-1-86	13	SLS INC. 2/19/98	DSW	21		
6	REV TO 7-1-87	14	ESI 1/30/01	REK	22		
7	REV TO 3-1-89	15	ESI 2/7/02	REK	23		
8	OGIS 3-10-92	16	HBS 2/22/04		24		



TUCKER COUNTY
 STATE OF WEST VIRGINIA
 Office of Assessor

DISTRICT **ST. GEORGE LICKING**
SHEET NO: 165
 Date, Aerial Photography: November, 1961 Date, Map: Dec., 1962
 Photo No: Scale: 1" = 400'