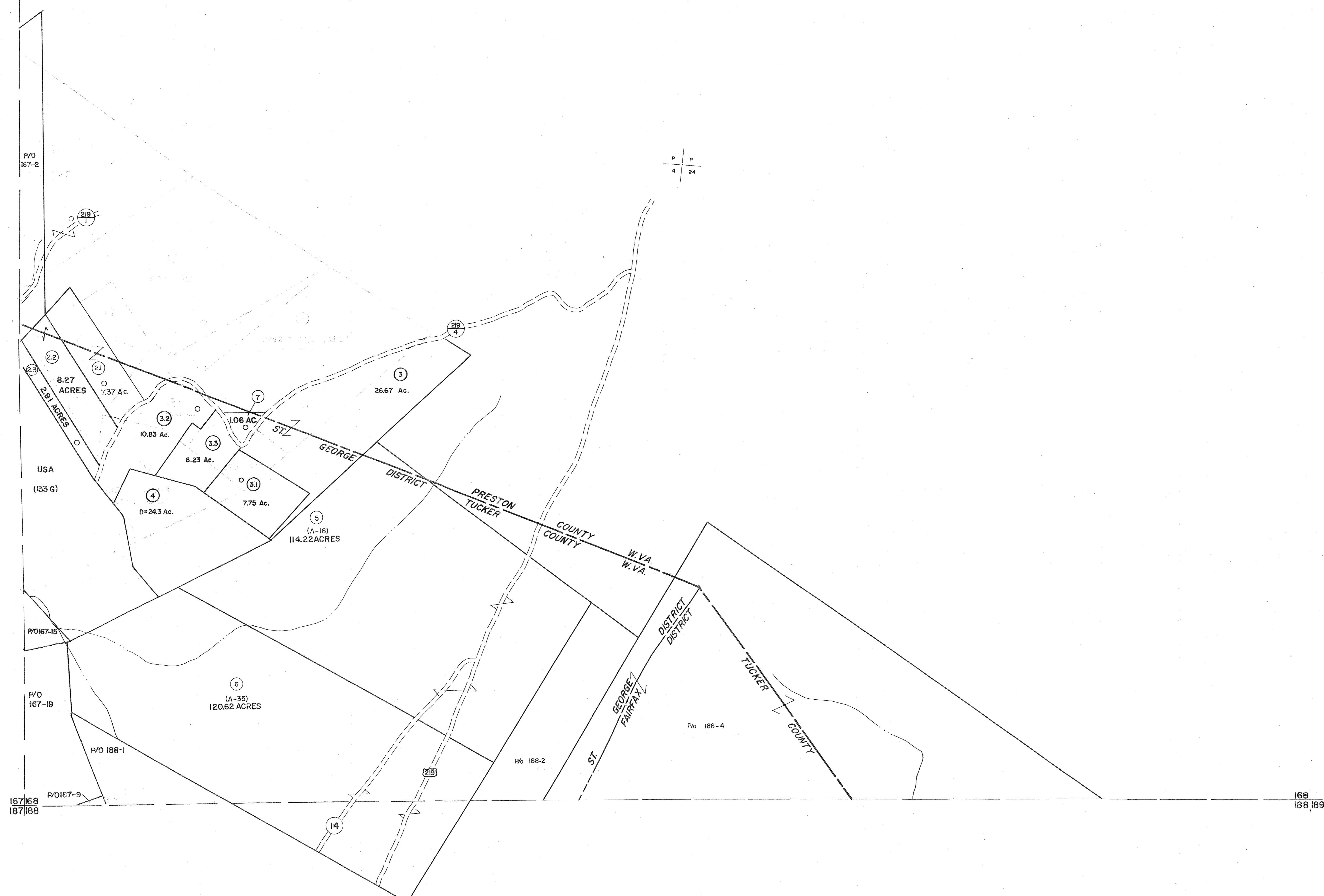


147
167|168

168



For Tax Purposes Only

Prepared by
MICHAEL BAKER, JR., INC.
Consulting Engineers
Rochester, Pennsylvania

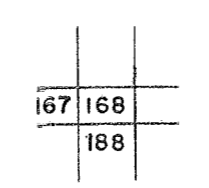
Legend

Property line	—————	Original lot line	-----
Edge of pavement or roadway	-----	Deed lot number	(15)
Corporation line	-----	Parcel or index number	(22)
District line	-----	Improvement	o
County line	-----	Railroad	+

Revisions

1	11/17/78	DG	9	3/26/07	SBH	17
2	REVISED TO 7-1-83		10	5-8-10	HAS	18
3	REV. TO 7-1-86	NCS	11	5-4-13	HAS	19
4	REV. TO 3-1-89	NCS	12			20
5	OGIS 12/30/90	DSH	13			21
6	OGIS 3-19-92	TL	14			22
7	OGIS 1/24/93	DSH	15			23
8	O.G.I.S 4-1-96	J.E.B	16			24

KEY MAP



TUCKER COUNTY

STATE OF WEST VIRGINIA
Office of Assessor

DISTRICT ST. GEORGE FAIRFAX

SHEET NO: 168

Date, Aerial Photography: November, 1961 Date, Map: Dec., 1962
Photo No: Scale: 1" = 400'