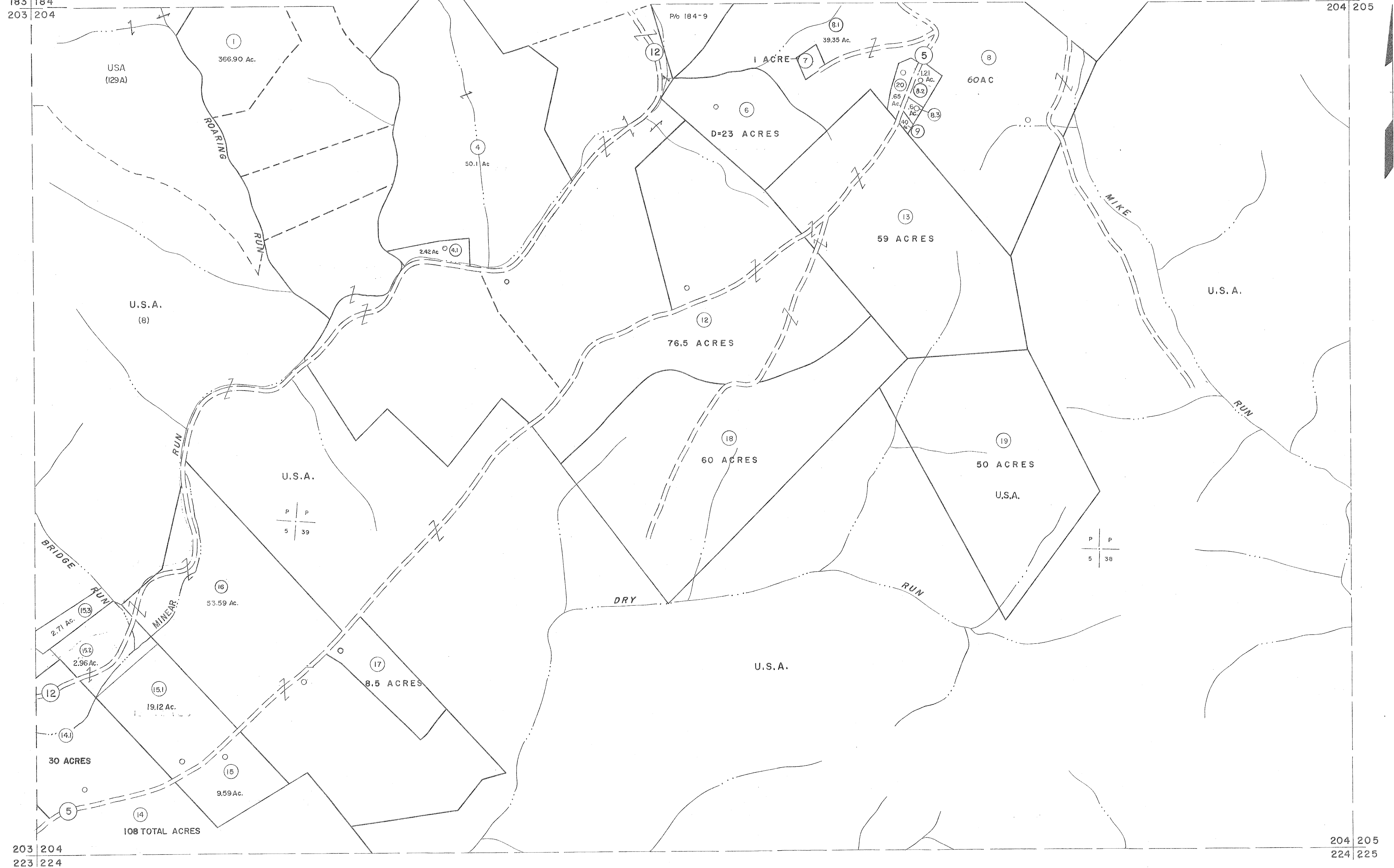


183 184  
203 204

184 185  
204 205



203 204  
223 224

204 205  
224 225

For Tax Purposes Only

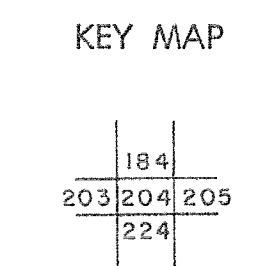
Prepared by  
MICHAEL BAKER, JR., INC.  
Consulting Engineers  
Rochester, Pennsylvania

**Legend**

Property line	—————	Original lot line	-----
Edge of pavement or roadway	-----	Deed lot number	(15)
Corporation line	-----	Parcel or index number	(20)
District line	-----	Improvement	o
County line	-----	Railroad	—+—+—

**Revisions**

1	10-3-63	9	O.G.I.S.	4-1-96	J.E.B.	17	SLS 9/20/17
2	11/20/78	10	SLS INC.	DDC 5/97		18	
3	4/1/82	11	SLS INC.	2/23/98	JWM	19	
4	REV. TO 7-1-86	12	SLS INC.	3/1/00	JWM	20	
5	OGIS 12/31/90	13	4-22-08			21	
6	OGIS 3-13-92	14	5-8-10			22	
7	OGIS 1/25/93	15	6/23/11		S.B.H.	23	
8	OGIS 2-95	16	5-4-13			24	



**TUCKER COUNTY**  
STATE OF WEST VIRGINIA  
Office of Assessor

DISTRICT **ST. GEORGE**

SHEET NO: **204**

Date, Aerial Photography: Nov., 1961      Date, Map: Dec, 1962  
Photo No:      Scale: 1" = 400'