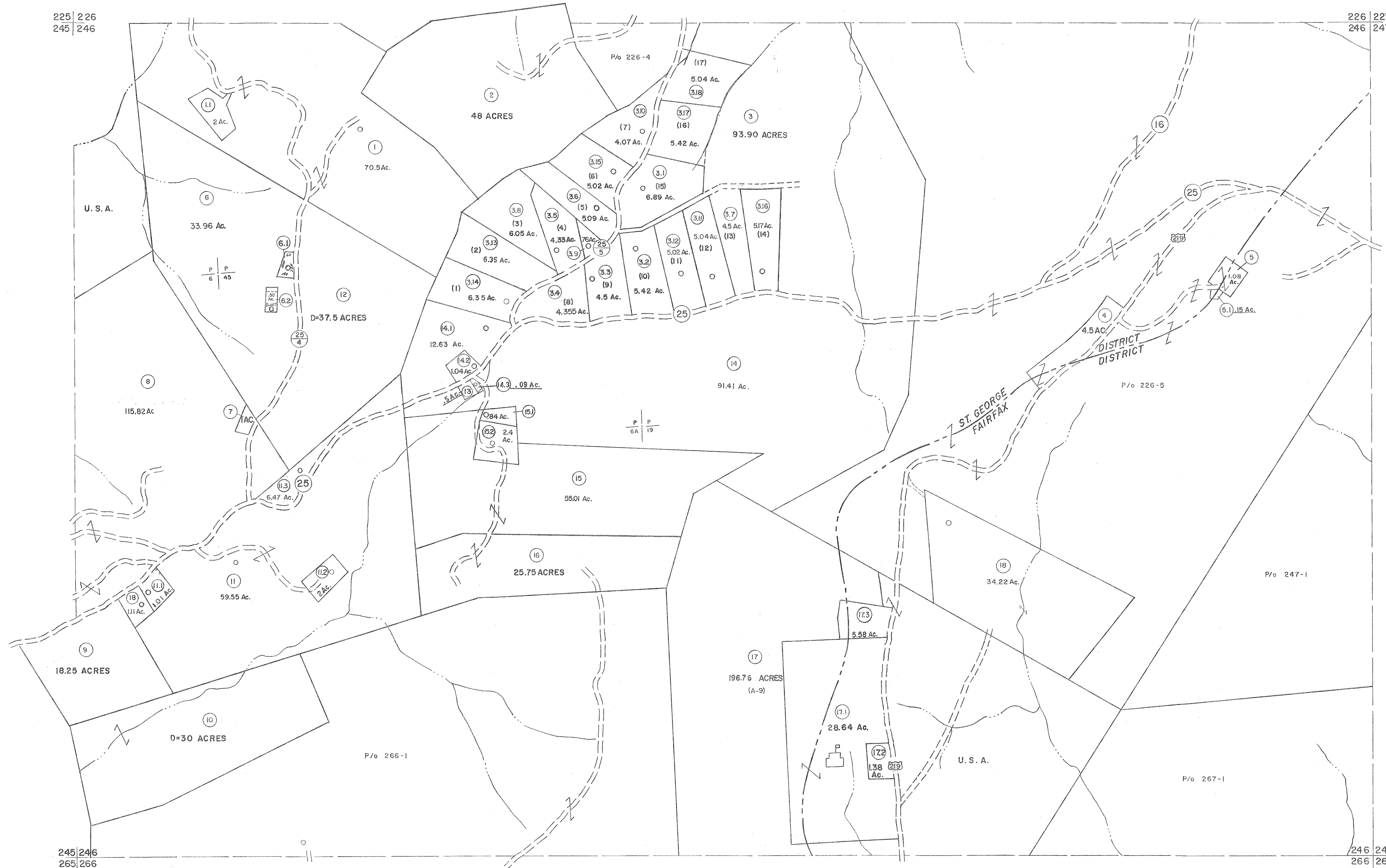


225 | 226
245 | 246

226 | 227
246 | 247



245 | 246
265 | 266

246 | 247
266 | 267

For Tax Purposes Only

Prepared by
MICHAEL BAKER, JR., INC.
Consulting Engineers
Rochester, Pennsylvania

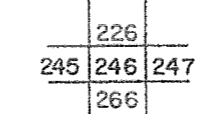
Legend

Property line	—————	Original lot line	-----
Edge of pavement or roadway	-----	Deed lot number	(15)
Corporation line	-----	Parcel or index number	(99)
District line	-----	Improvement	○
County line	-----	Railroad	—+—

Revisions

1	11-21-78	T.G.	2	OGIS	3-19-92	TL	17	ESI	2/20/03	REK
2	Revised to 7-1-83	SBH	10	OGIS	12/11/93	SAJ	18	HBS	2/19/03	
3	7-1-84	L.E.S.	11	OGIS	2-95	HD	19	3/21/05	SBH	
4	REV TO 7-1-86	NCS	12	O.G.I.S.	4-1-96	J.E.B.	20	3/24/07	SBH	
5	Revised to 7-1-87	SBH	13	SLS INC.	-DDC 5/97		21	4-21-09	H.S.	
6	REV TO 3-1-89	R.E.R.	14	SLS INC.	2/23/98	J.W.M.	22	5-8-10	H.S.	
7	OGIS	12/31/90	DSH	15	ESI	2/8/02	REK	23	5-4-13	H.S.
8				16				24	SLS 9/8/17	

KEY MAP



TUCKER COUNTY
STATE OF WEST VIRGINIA
Office of Assessor

DISTRICT

ST. GEORGE
FAIRFAX

SHEET NO: 246

Date, Aerial Photography: Nov., 1961 Date, Map: Dec., 1962
Photo No: Scale: 1" = 400'