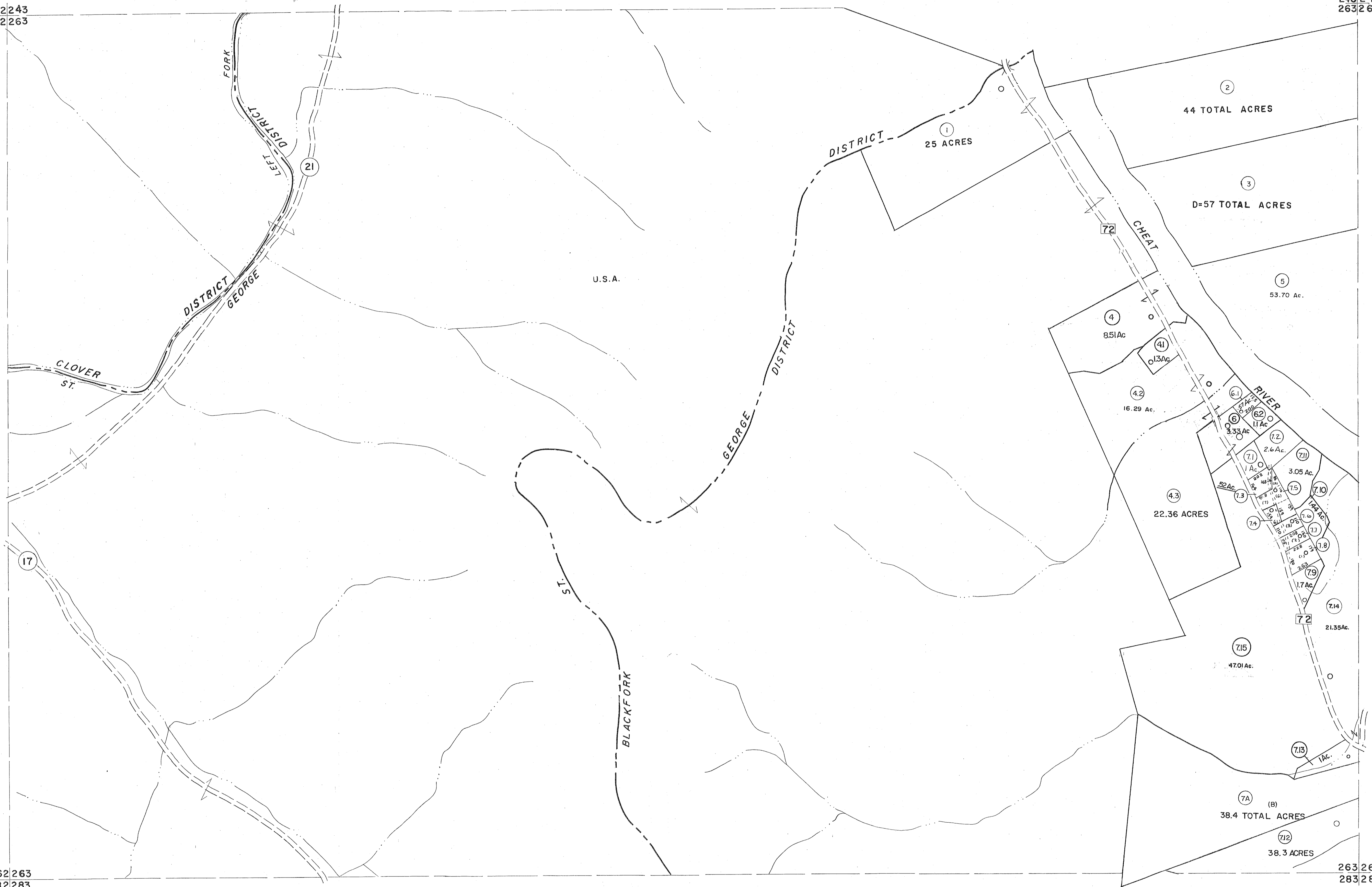


242|243
262|263

243|244
263|264

262|263
282|283

263|264
283|284



For Tax Purposes Only

Prepared by
MICHAEL BAKER, JR., INC.
Consulting Engineers
Rochester, Pennsylvania

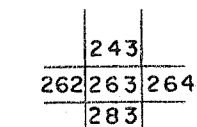
Legend

Property line	—————	Original lot line	—————
Edge of pavement or roadway	———	Deed lot number	(15)
Corporation line	-----	Parcel or index number	(99)
District line	- - - - -	Improvement	o
County line	-----	Railroad	—+—

Revisions

1	6-3-66	9	OGIS	3-19-92	TL	17	6/24/11	SBH
2	6-4-75	10	O.G.I.S	4-1-96	J.E.B	18		
3	11-27-78	11	ESI	1/31/01	REK	19		
4	Revised to 7-1-88	12	H&S	2/19/04		20		
5	July 1995	13		3/28/06	SBH	21		
6	Revised to 7-1-87	14		6-22-08	tt 4.5	22		
7	REV. TO 3-1-89	15	R.E.B.	5-8-10	tt 4.5	23		
8	OGIS	16	DSH			24		

KEY MAP



TUCKER COUNTY
STATE OF WEST VIRGINIA
Office of Assessor

DISTRICT ST. GEORGE CLOVER
BLACKFORK

SHEET NO: 263

Date, Aerial Photography: November, 1961 Date, Map: Dec, 1962
Photo No: Scale: 1" = 400'