



THIS DOCUMENT IS A TAX MAP. It is compiled for the purpose of taxation from available record evidence and has not been field verified. It is not a valid survey plat. The existence of data on this map does not imply any "official" status to such data. The Upshur County Assessor's Office assumes no liability that might result from the inappropriate use of this document.

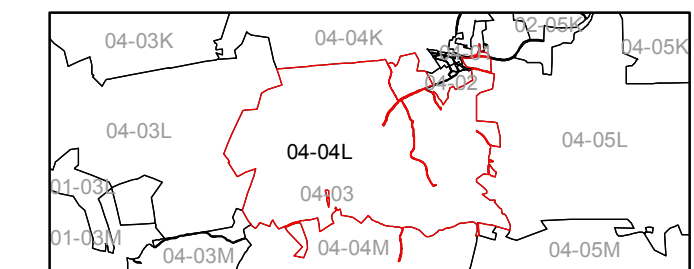
RESTRICTIONS: All tax maps created under the provisions of the reappraisal legislation are the property Assessor of Upshur County, West Virginia and the reproduction, copying, modification, distribution, or sale of any copies thereof without the written permission of the Upshur County Assessor is prohibited by law.

Upshur County Assessor's Office
 Dustin Zickfoose-Assessor
 Junior Mcgee-Mapper

Revised 10/26/2018			
Revised 1/30/2019			

STATE OF WEST VIRGINIA
 COUNTY OF UPSHUR
 Office of Assessor

- Legend**
- Property Line ———
 - Lot Line ——— (15)
 - Parcel Number ——— (99)
 - Water ———
 - Railroad ———
 - Corporation Line ———
 - County Line ———



MEADE DISTRICT
 Map: 04L
 Date, Map: 1/30/2019
 Scale: 1" = 400'