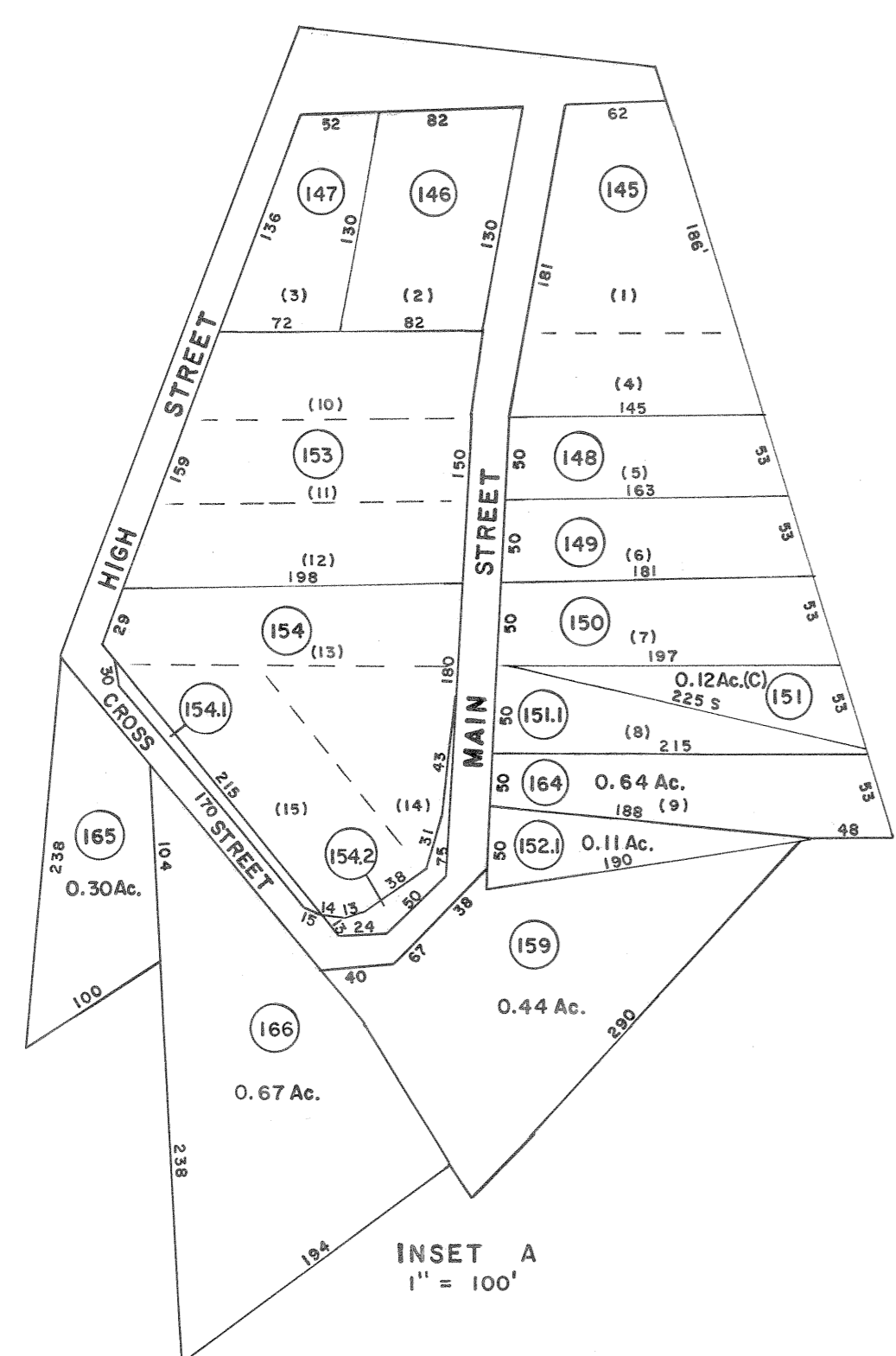
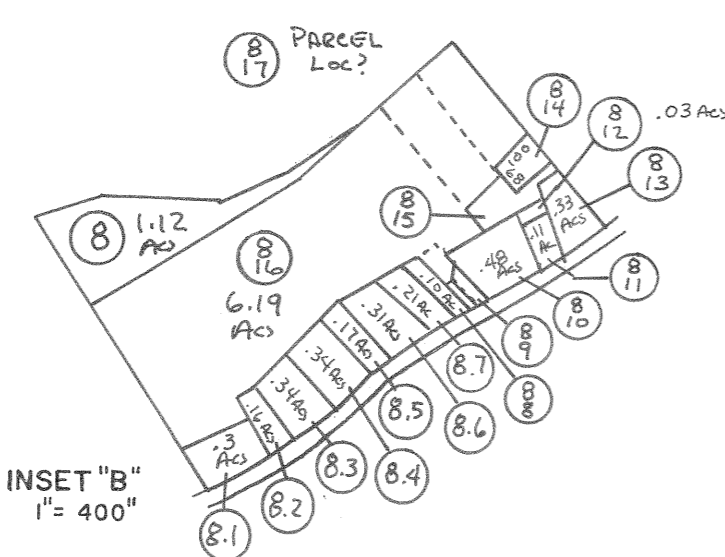


KENTUCKY

- 41 1 4.9 Acs Loc? (SOLD TO STATE)
- 41 2 .2 Acs Loc? (SOLD TO STATE)
- 41 3 .1 Acs Loc? (SOLD TO STATE)



Legend

Property line	-----	Original lot line	-----
Edge of pavement or roadway	-----	Deed lot number in parenthesis	(15)
Corporation line	-----	Parcel or index number in circle	○
District line	-----	Improvement	○
County line	-----	Railroad	+++++

Revisions

1	May 1961	9	
2	Sept. 1963	10	
3	8-16-72	11	
4	7-8-76	12	D.S.
5	10-31-79	13	
6	Revised to 7-1-88	14	
7		15	
8		16	
17	PENTREE, INC.	7-1-83	
18	PARCEL NOS. 12, 12.1, 12.2, 12.3, 12.4, 13, 14B, 15A		
19	15B, 15C, 15D, 16, 16.1, 17, 18, 18A, 20, 22, 23, 24, 25, 43, 44, 48, 130.2 & 142C DELETED.		

WAYNE COUNTY — WEST VIRGINIA
Office of Assessor

CEREDO DISTRICT
City — Town — District:

Map No: 4
Date, Aerial Photography: APR. 1960 Date, Map: NOV. 1960
Photo No: 11-4-138 Scale: 1" = 400'

SHEET INDEX
PREPARED BY
BOOTHE CO. INC.
GREENSBORO, N.C.

