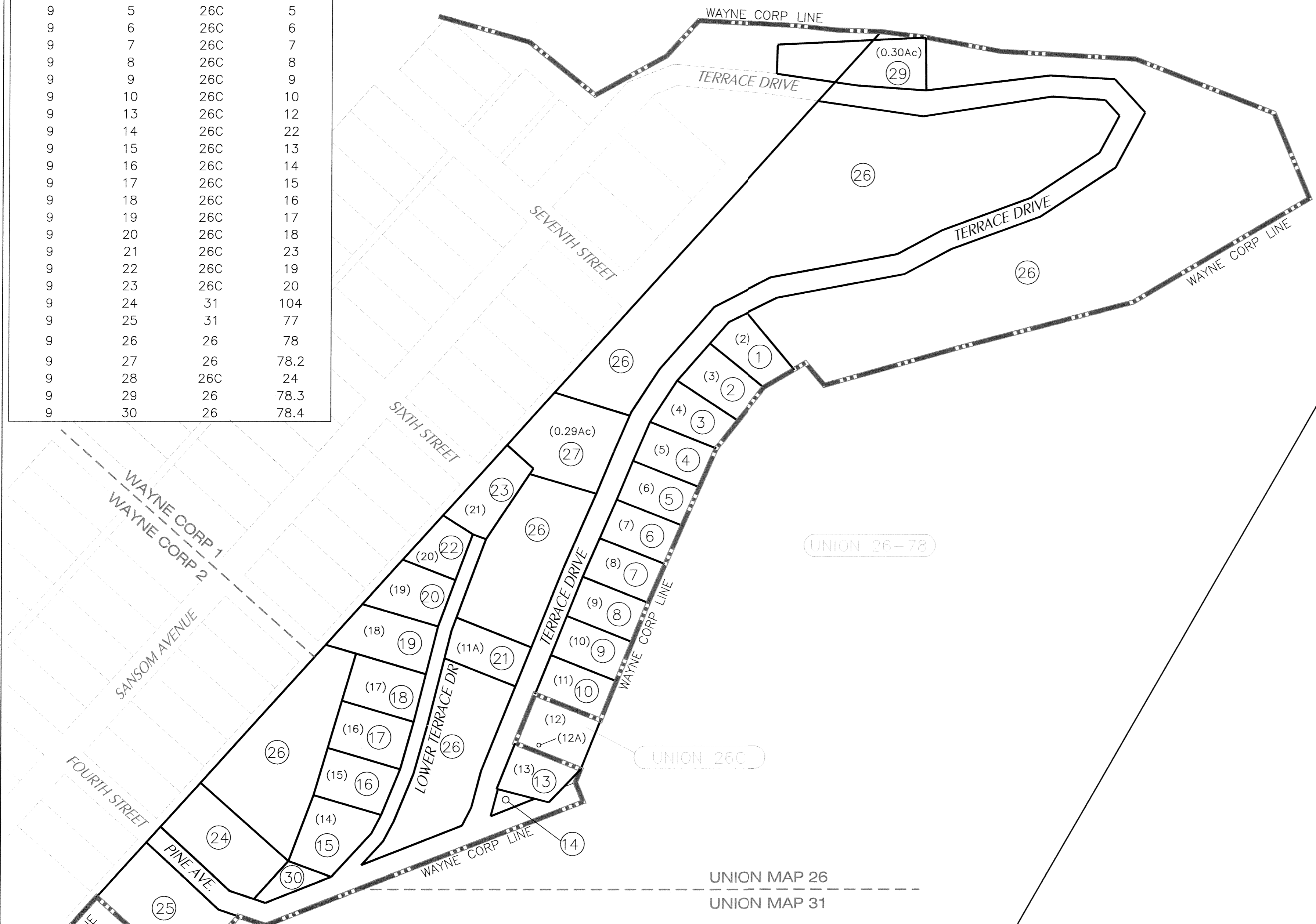
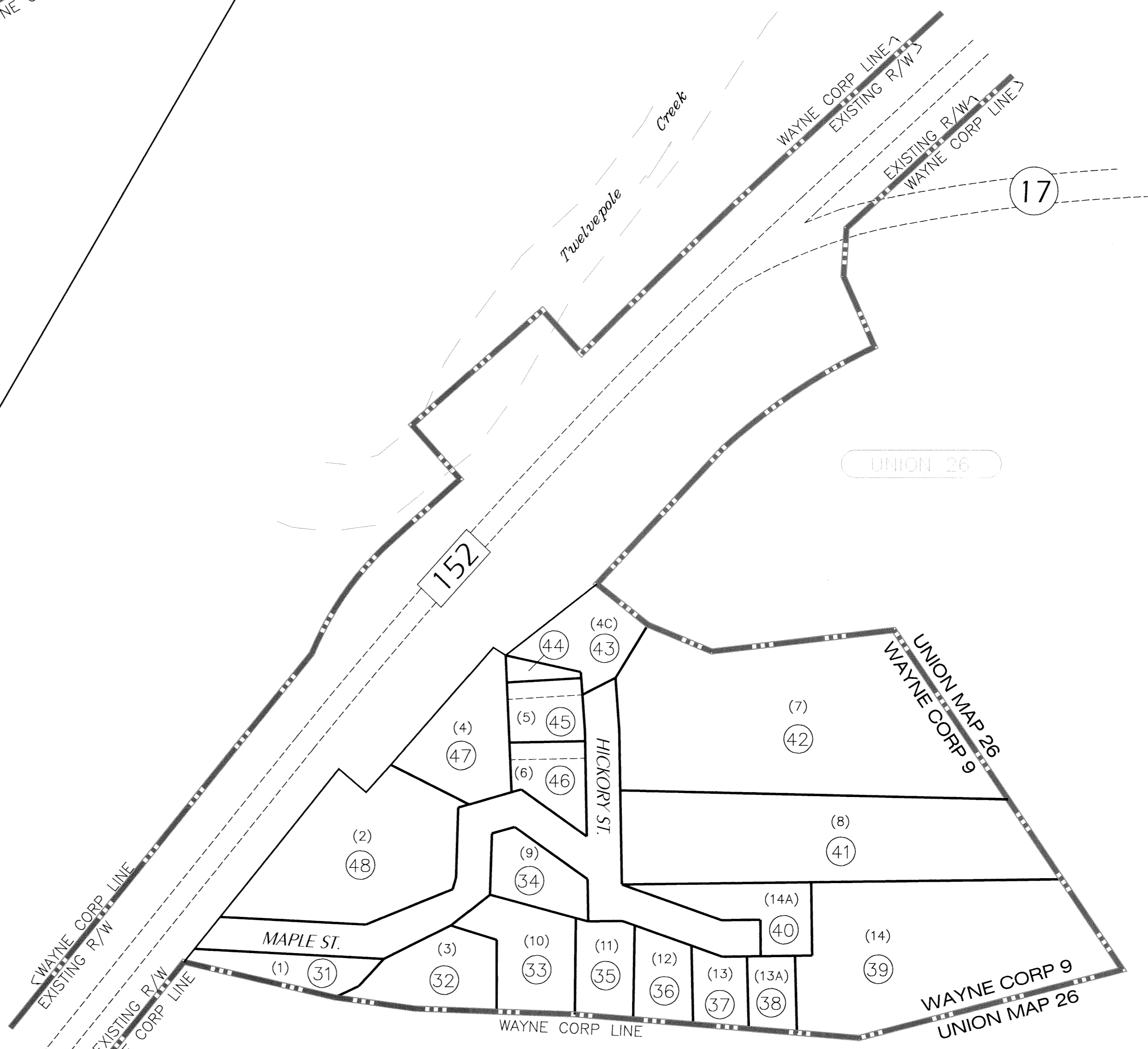


INCORPORATED PARCEL # CHANGES			
NEW MAP	NEW PARCEL	OLD MAP	OLD PARCEL
9	1	26C	1
9	2	26C	2
9	3	26C	3
9	4	26C	4
9	5	26C	5
9	6	26C	6
9	7	26C	7
9	8	26C	8
9	9	26C	9
9	10	26C	10
9	13	26C	12
9	14	26C	22
9	15	26C	13
9	16	26C	14
9	17	26C	15
9	18	26C	16
9	19	26C	17
9	20	26C	18
9	21	26C	23
9	22	26C	19
9	23	26C	20
9	24	31	104
9	25	31	77
9	26	26	78
9	27	26	78.2
9	28	26C	24
9	29	26	78.3
9	30	26	78.4

INCORPORATED PARCEL # CHANGES			
NEW MAP	NEW PARCEL	OLD MAP	OLD PARCEL
9	31	26B	49
9	32	26B	48
9	33	26B	47
9	34	26B	51
9	35	26B	46
9	36	26B	45
9	37	26B	44
9	38	26B	43
9	39	26B	41
9	40	26B	42
9	41	26B	57
9	42	26B	56
9	43	26B	55
9	44	26B	55.1
9	45	26B	54
9	46	26B	52
9	47	26B	53
9	48	26B	50



CEDAR CREST SUBDIVISION
MB 7 PGS 41 & 71



MAPLE HEIGHTS SUBDIVISION
MB 6 PG 46

This tax map is a copy of the Assessor's official record and the reproduction, copying, distribution or sale of such tax maps or any copies thereof without the written permission of the County Assessor is prohibited.

THIS IS A TAX MAP, NOT A SURVEY MAP.
This map was compiled from existing surveys & record documents for **TAXATION PURPOSES ONLY**. The lines and features shown hereon have not been field verified and should not be relied upon to determine the actual true location of any boundary or other feature. The Wayne County Assessor's Office assumes no liability for the improper use of this document, the accuracy or placement of any parcel or other information depicted hereon, or lack thereof.
SCALE: 1" = 100'

LEGEND	
Property Line	—
Road, Paved Width	—
Corporation Line	—
District Line	—
County Line	—
Original Lot Line	—
Deed Lot Number	(10)
Parcel Number	(0)
Improvement	o
Railroad	—

REVISIONS	
CREATED:	MAY 2005, MMS
LAST UPDATE:	LAST UPDATE: 5/10/05, MMS

WAYNE COUNTY, WV
Office of Assessor
FOR TAX PURPOSES ONLY

TOWN OF WAYNE
MAP 9
AERIAL PHOTOGRAPHY: 2003,