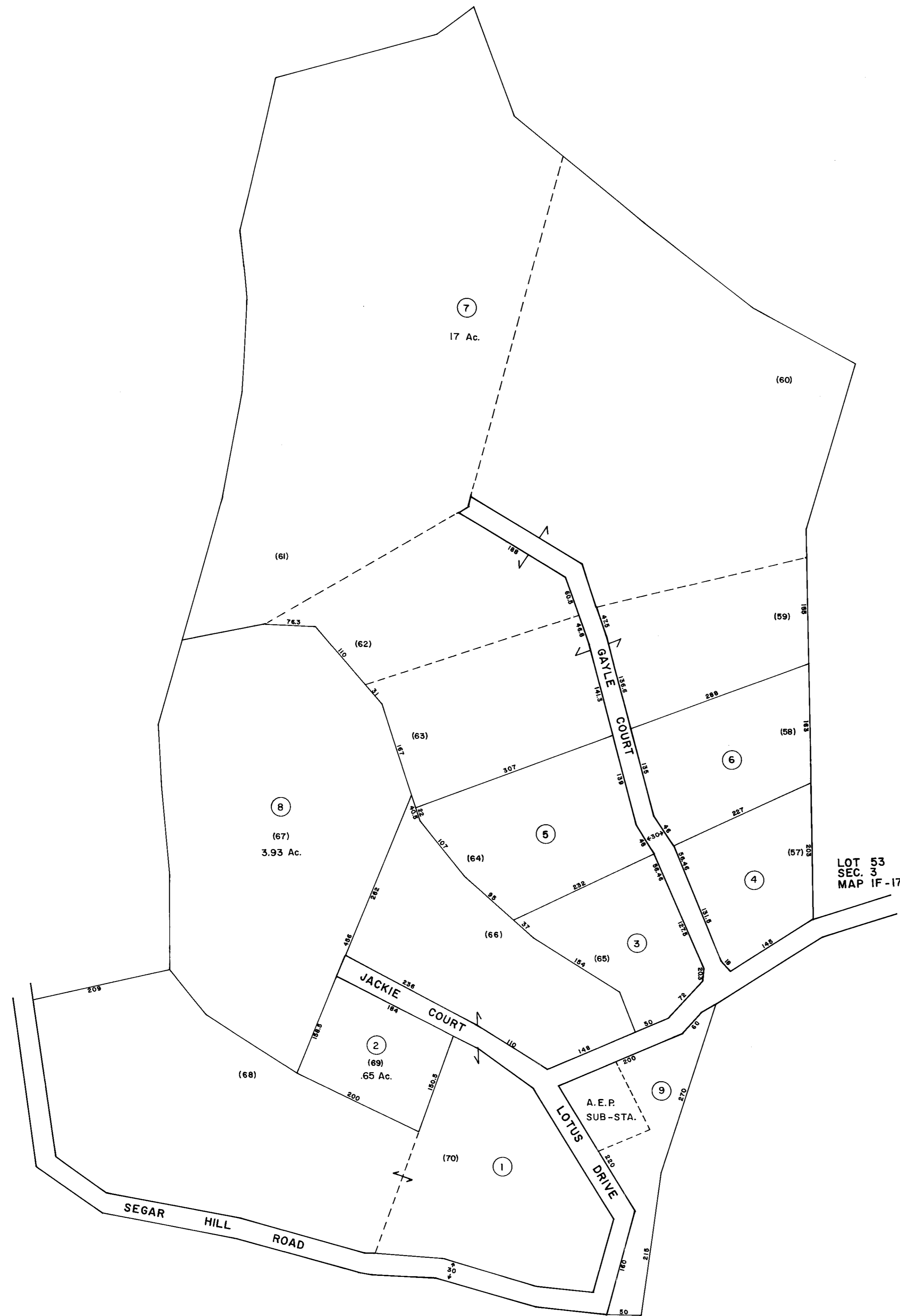


INTERSTATE 64



HUBBARD HEIGHTS SECTION III

HUBBARD HEIGHTS SECTION IV  
PLAT BOOK 6-110



For Tax Purposes Only

Prepared by  
LOCAL GOVERNMENT RELATIONS DIV.  
STATE TAX COMMISSIONER  
CHARLESTON, W.VA.

LEGEND

Property line	—————
Edge of pavement or roadway	- - - - -
Corporation line	- · - · -
District line	- · - - -
County line	- · - · -
State line	- · - · -
Land hook	— · —
Water	~~~~~

Original lot line	—————	(15)
Deed lot number	⊙	(15)
Parcel or index number	⊙	(15)
Improvement	○	(15)
Railroad	— · —	(15)
Scaled dimension	— ( ) —	(5)
Deed dimension	— (D) —	(D)
Calculated area	— (C) —	(C)

REVISIONS

NEW MAP TO 7-1-86	NCS

RESTRICTION

All tax maps created under the provisions of reappraisal legislation are the property of the State of West Virginia and the reproduction, copying, distribution or sale of such tax maps or any copies thereof without the written permission of the State Tax Commissioner is prohibited by law.

KEY MAP

WAYNE COUNTY ~ WEST VIRGINIA  
Office of Assessor

WESTMORELAND DIST.  
SHEET NO. 1G

Date, Aerial Photography:  
Photo No:

Date, Map: 9-86  
Scale: 1" = 100'