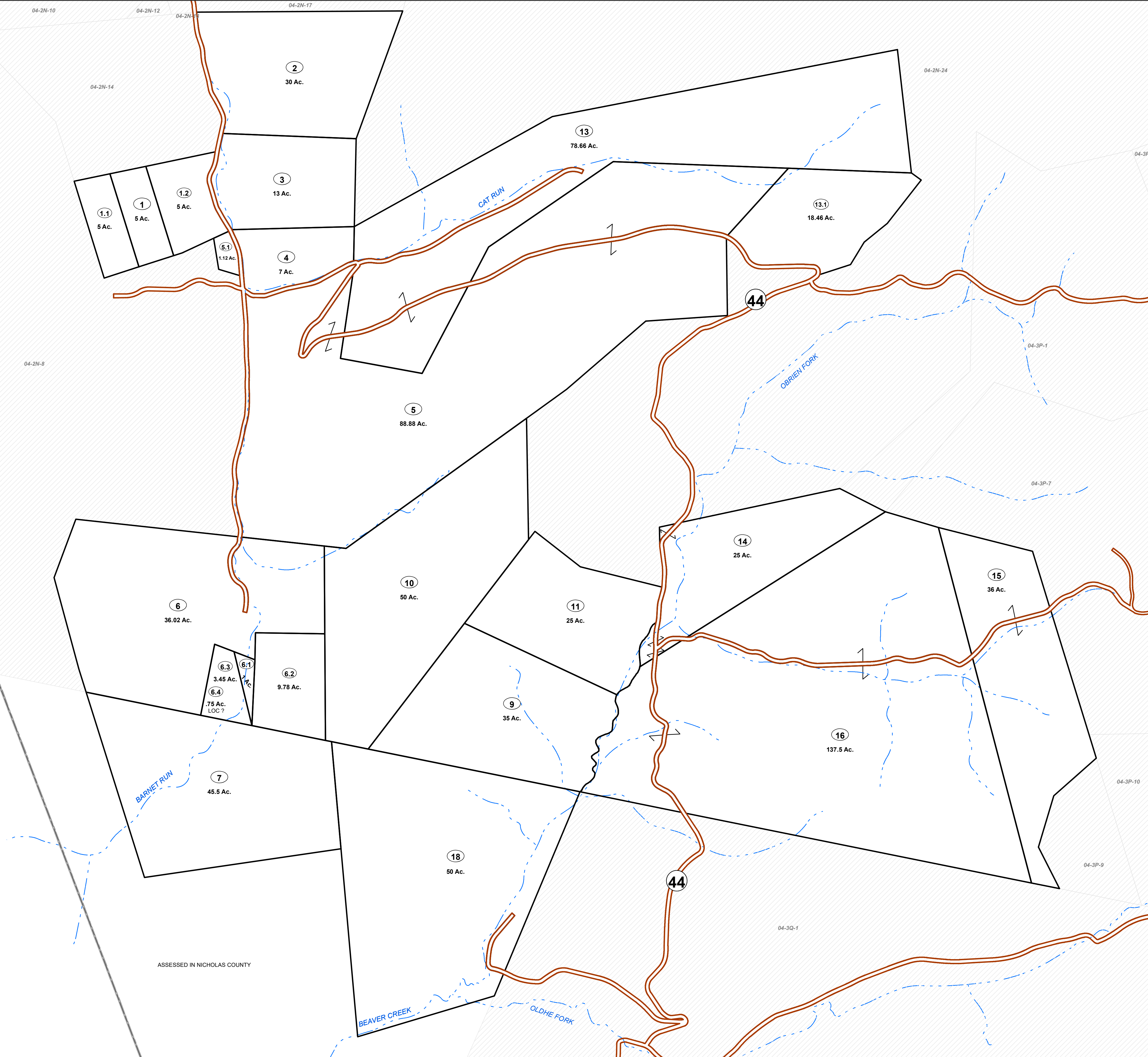


WEBSTER COUNTY
NICHOLAS COUNTY



ASSESSED IN NICHOLAS COUNTY

FOR TAX PURPOSES ONLY

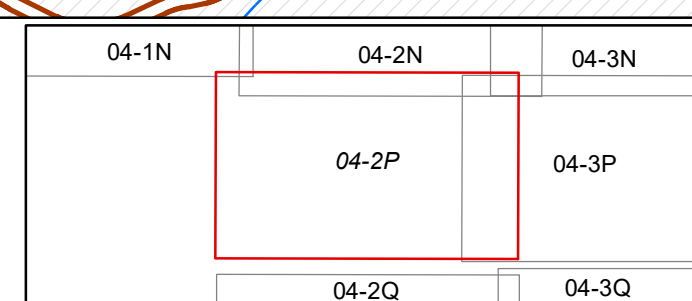
Prepared By:
Max Cochran
Webster County Assessor

Legend

| | | | |
|-------------------|-------------------|---------------|-------------|
| Property Line | Original Lot Line | Lot Number | (15) |
| Road Right of Way | Corporation Line | District Line | County Line |
| Parcel Number | Water | Railroad | |

| | | | | | |
|---|---|--------------------|----|--|----|
| R | 1 | Revised 04/01/2018 | 9 | | 17 |
| O | 2 | Revised 01/31/2019 | 10 | | 18 |
| V | 3 | | 11 | | 19 |
| I | 4 | | 12 | | 20 |
| S | 5 | | 13 | | 21 |
| I | 6 | | 14 | | 22 |
| O | 7 | | 15 | | 23 |
| N | 8 | | 16 | | 24 |

STATE OF WEST VIRGINIA
COUNTY OF WEBSTER
Office of Assessor



GLADE
Map: 2P
Date, Aerial Photography: 2003
Date, Map: 1/31/2019
Scale: 1" = 400'