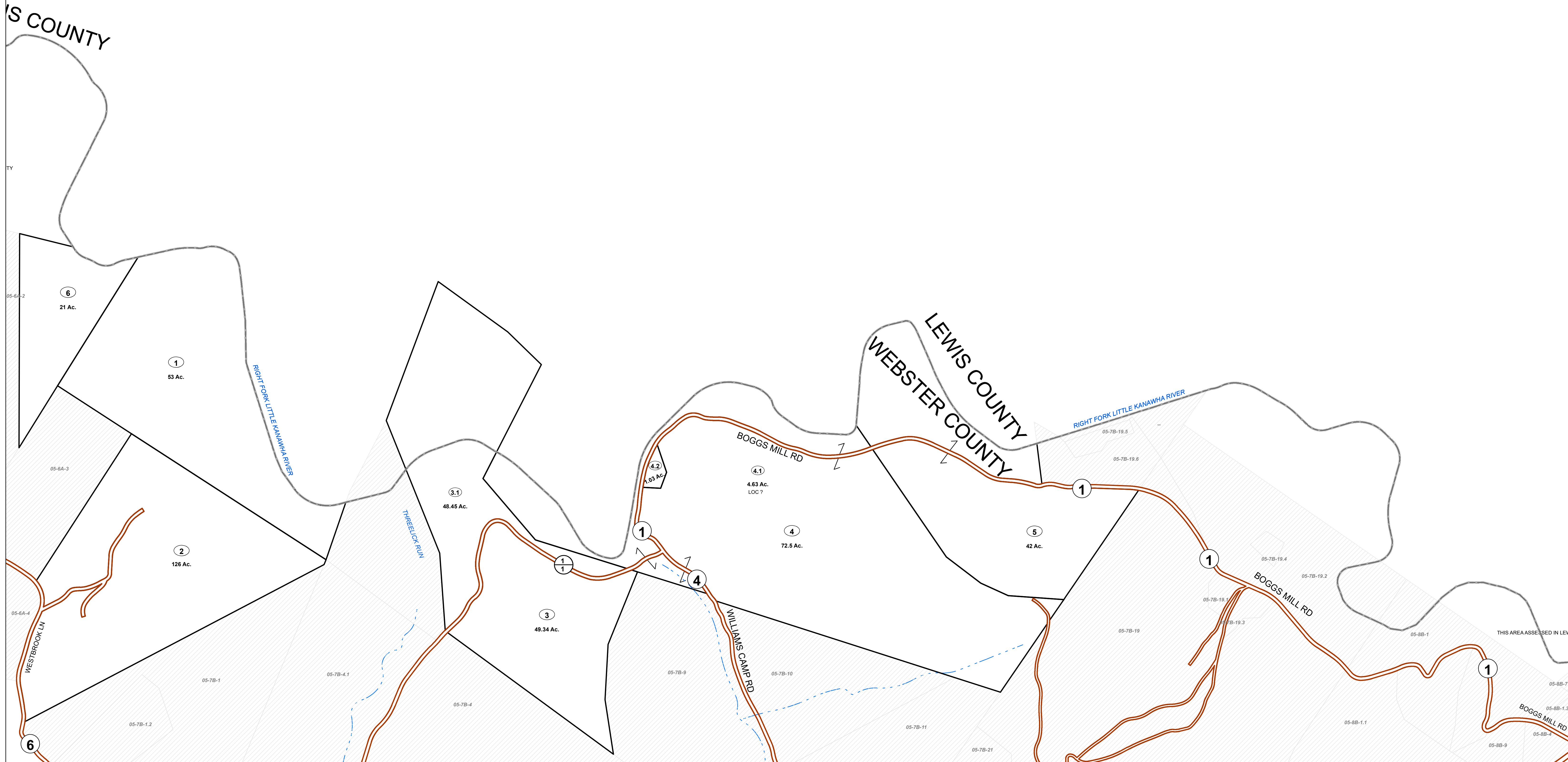


IS COUNTY



FOR TAX PURPOSES ONLY

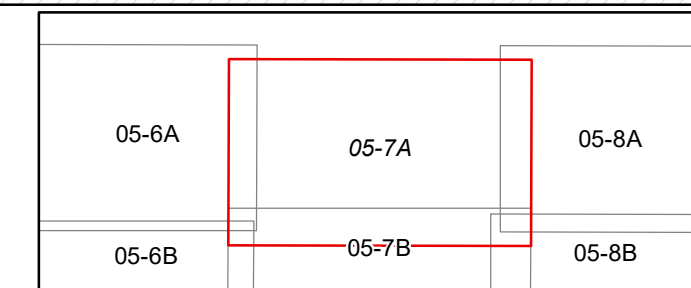
Prepared By:

**Max Cochran**  
Webster County Assessor

Legend	
Property Line	Original Lot Line
Road Right of Way	Lot Number (15)
Corporation Line	Parcel Number (99)
District Line	Water
County Line	Railroad

R	1	Revised 04/01/2018	9		17
O	2	Revised 01/31/2019	10		18
V	3		11		19
I	4		12		20
S	5		13		21
J	6		14		22
O	7		15		23
N	8		16		24

**STATE OF WEST VIRGINIA**  
**COUNTY OF WEBSTER**  
Office of Assessor



HACKER VALLEY  
Map: 7A

Date, Aerial Photography: 2003

Date, Map: 1/31/2019

Scale: 1" = 400'