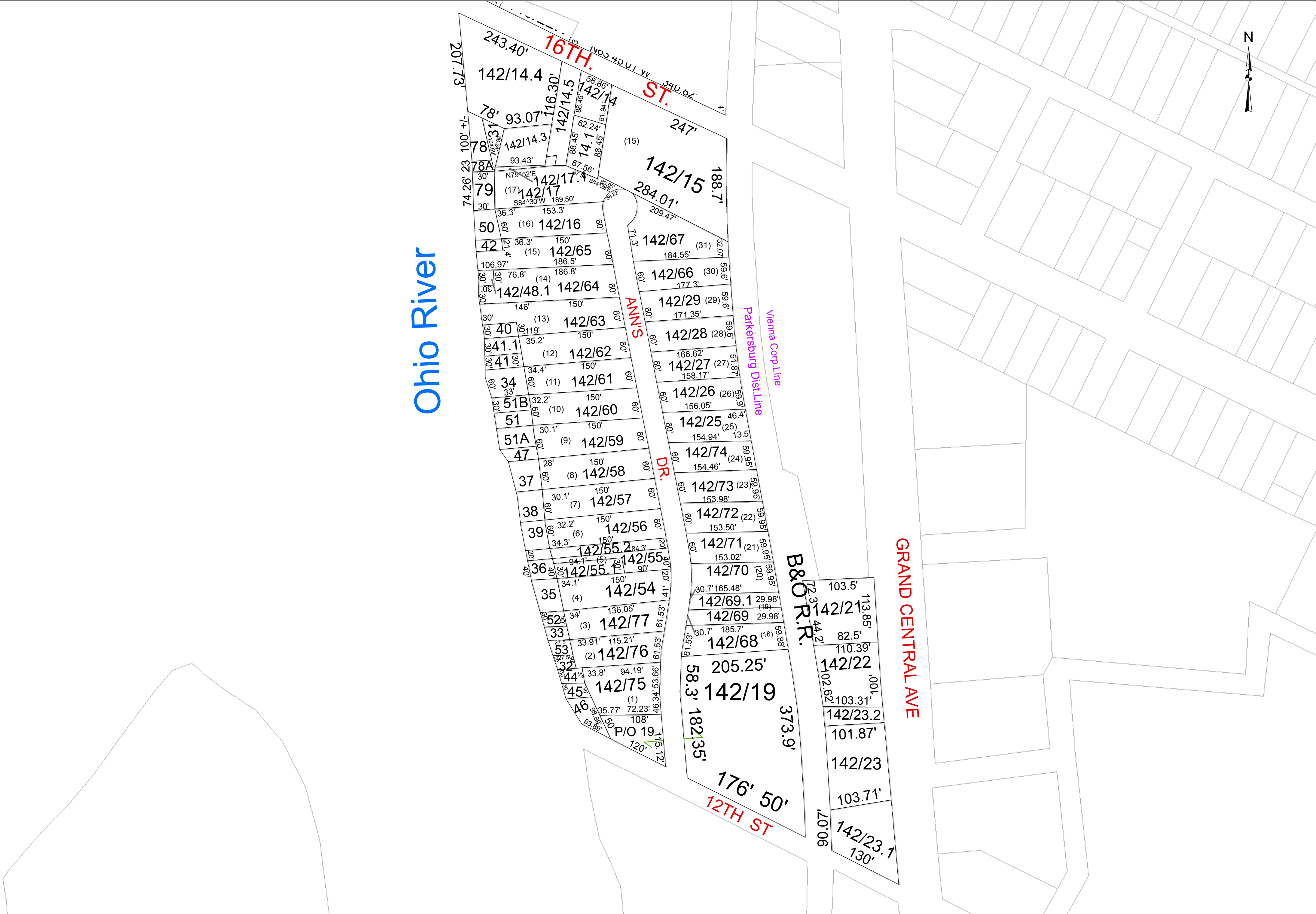




Ohio River



For Tax Purposes Only	
OH	143
	142 11
	141

Legend	
	Previous Deed
	Property
	Railroad Right of Way
	Road and Railroad RW
	Road Easement
	Road Right of Way
	HOSPITAL
	POST OFFICE
	SCHOOL
	Deed lot Number
	MAP / Parcel Number
	District Number
	District Lines
	CEMT.
	LIBRARY
	AIRPORT
	CHURCH
	FIRE STATION

Revisions		
1		7
2		8
3		9
4		10
5		11
6		12
		13
		14
		15
		16
		17
		18

WOOD COUNTY
STATE OF WEST VIRGINIA
Office of Assessor

District	SubDivisions
PARKERSBURG DISTRICT 04	GRIMM'S ISLAND VIEW
SHEET NO: 142	
Date, Aerial Photography: 2003	Date: 01/02/2019