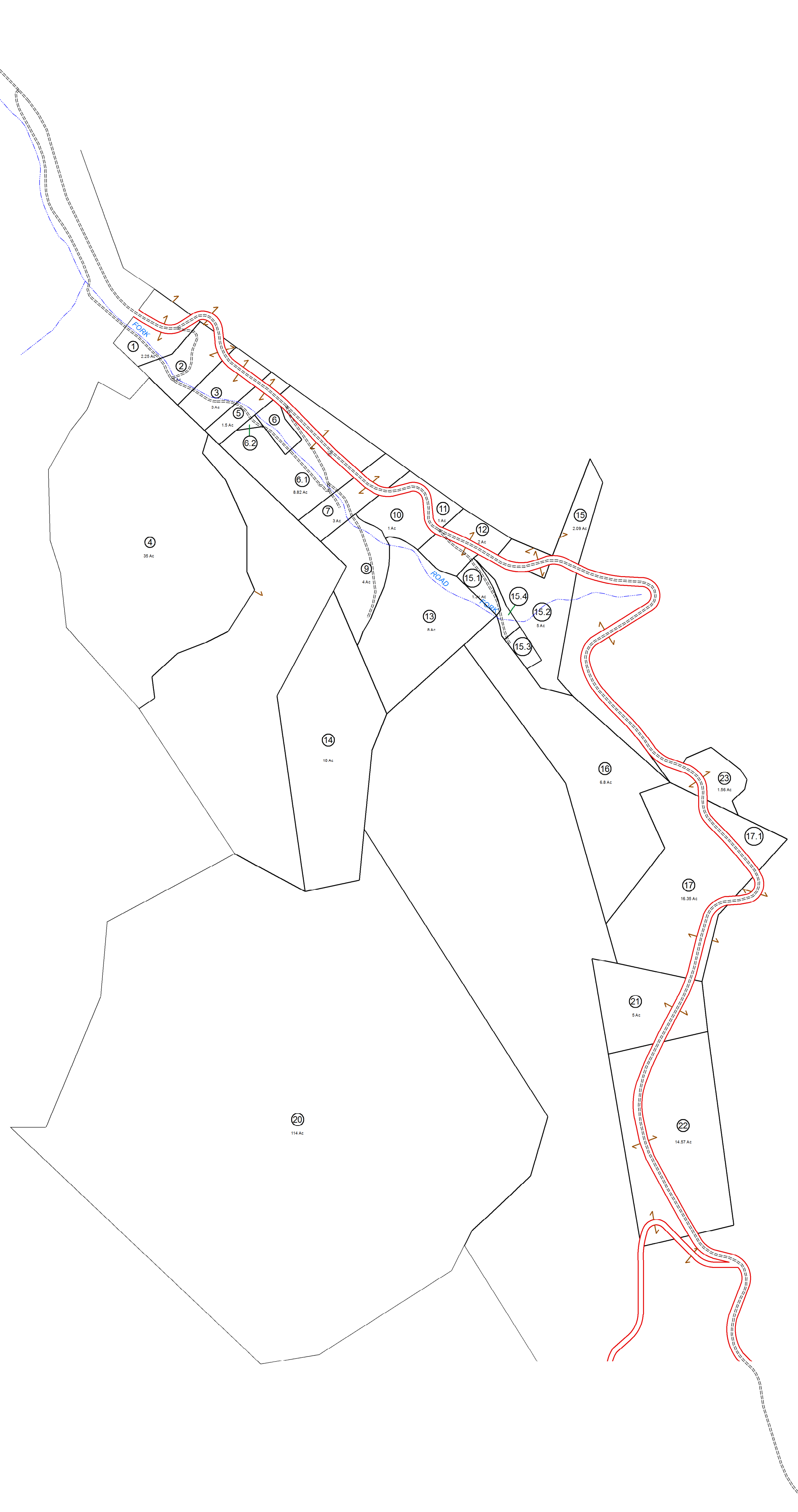


PIO 102-1



Prepared by
Kimball
 Kimball Associates
 Architects and Engineers

For Tax Purposes Only

The tax map was compiled for purposes of taxation from available record evidence and has not been field verified. This map is not a valid survey plat and the data on this map does not imply any official status to such data. The State of West Virginia and county assessor's office assume no liability that might result from the use of this map.

Legend

- Boundary
 - BOUNDARYTYPE**
 - Water
 - Previous Deed
 - Property
 - Rained Right of Way
 - Road Easement
 - Road Right of Way
- Deed lot Number (15)
 - Parcel or Index Number (5)
 - District Number (9)

Revisions

1	7	13
2	8	14
3	9	15
4	10	16
5	11	17
6	12	18

119
126 127 128
134

WYOMING COUNTY
 STATE OF WEST VIRGINIA
 Office of Assessor

District **OCEANA**

SHEET NO: 127

Date, Aerial Photography: November, 1962 Date, Map: Nov 30, 2011
 Photo No: _____ Scale: 1" = 400'