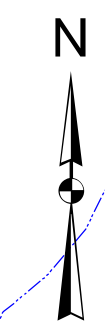




P/O 124-1



For Tax Purposes Only

Prepared by
Kimball
 Kimball Associates
 Architects and Engineers

The tax map was compiled for purposes of taxation from available record evidence and has not been field verified. This map is not a valid survey plat and the data on this map does not imply any official status to such data. The State of West Virginia and county assessor's office assume no liability that might result from the use of this map.

Legend

Boundary
BOUNDARYTYPE
 Water
 - - Previous Deed
 Property
 Rained Right of Way
 - - Road Easement
 Road Right of Way

Deed lot Number (15)
 Parcel or Index Number (5)
 District Number (9)

Revisions

1	7	13
2	8	14
3	9	15
4	10	16
5	11	17
6	12	18

124	125
130	

WYOMING COUNTY
 STATE OF WEST VIRGINIA
 Office of Assessor

District
SLAB FORK

SHEET NO: 125

Date, Aerial Photography: November, 1962 Date Map: Nov 30, 2011
 Photo No.: Scale: 1" = 400'