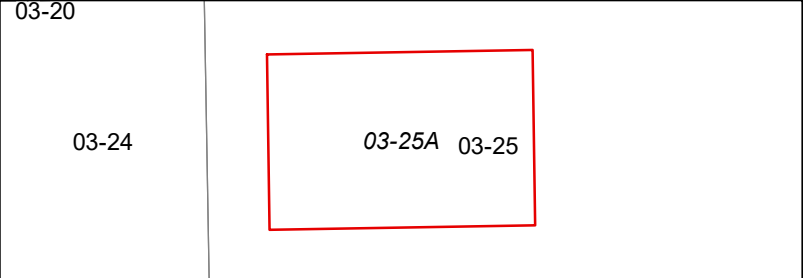


FOR TAX PURPOSES ONLY
 Prepared By
 Barbour County Assessor's Office
 Philippi, West Virginia

This tax map was compiled for the purpose of taxation from available record evidence and has not been field verified. This map is not a valid survey plat and the data on the map does not imply any official status to such data. The State of West Virginia and the Barbour County Assessor's Office assume no liability that might result from the use of this map.

- Legend**
- Property Line
 - Road Right of Way
 - Corporation Line
 - District Line
 - County Line
 - Original Lot Line
 - Lot Number
 - Parcel Number
 - Water
 - Railroad



BARBOUR COUNTY
WEST VIRGINIA
 Office of Assessor



COVE DISTRICT
 Map: 25A
 Date, Aerial Photography: 2010
 Date, Map: 1/25/2022
 Scale: 1" = 100'