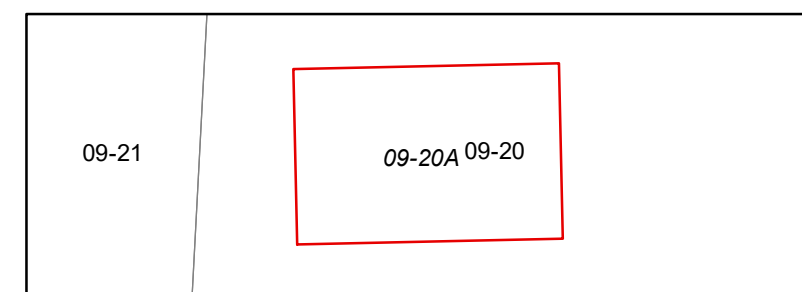


FOR TAX PURPOSES ONLY
 Prepared By
 Barbour County Assessor's Office
 Philippi, West Virginia

This tax map was compiled for the purpose of taxation from available record evidence and has not been field verified. This map is not a valid survey plat and the data on the map does not imply any official status to such data. The State of West Virginia and the Barbour County Assessor's Office assume no liability that might result from the use of this map.

Legend
 Property Line
 Road Right of Way
 Corporation Line
 District Line
 County Line
 Original Lot Line
 Lot Number
 Parcel Number
 Water
 Railroad



**BARBOUR COUNTY
 WEST VIRGINIA**
 Office of Assessor



PLEASANT DISTRICT
 Map: 20A
 Date, Aerial Photography: 2010
 Date, Map: 1/25/2022
 Scale: 1" = 100'