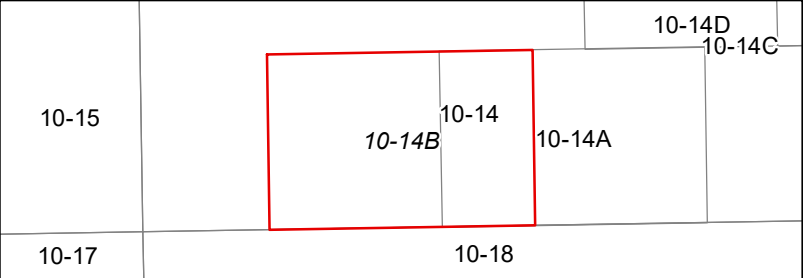


FOR TAX PURPOSES ONLY  
 Prepared By  
 Barbour County Assessor's Office  
 Philippi, West Virginia

This tax map was compiled for the purpose of taxation from available record evidence and has not been field verified. This map is not a valid survey plat and the data on the map does not imply any official status to such data. The State of West Virginia and the Barbour County Assessor's Office assume no liability that might result from the use of this map.

Legend	
Property Line	Original Lot Line
Road Right of Way	Lot Number
Corporation Line	Parcel Number
District Line	Water
County Line	Railroad



**BARBOUR COUNTY**  
**WEST VIRGINIA**  
 Office of Assessor



UNION DISTRICT  
 Map: 14B  
 Date, Aerial Photography: 2010  
 Date, Map: 1/25/2022  
 Scale: 1" = 100'