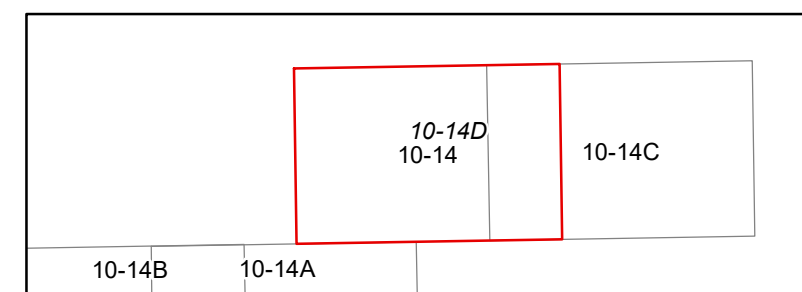


FOR TAX PURPOSES ONLY
 Prepared By
 Barbour County Assessor's Office
 Philippi, West Virginia

This tax map was compiled for the purpose of taxation from available record evidence and has not been field verified. This map is not a valid survey plat and the data on the map does not imply any official status to such data. The State of West Virginia and the Barbour County Assessor's Office assume no liability that might result from the use of this map.

| Legend | |
|-------------------|-------------------|
| Property Line | Original Lot Line |
| Road Right of Way | Lot Number |
| Corporation Line | Parcel Number |
| District Line | Water |
| County Line | Railroad |



BARBOUR COUNTY
WEST VIRGINIA
 Office of Assessor



UNION DISTRICT
 Map: 14D
 Date, Aerial Photography: 2010
 Date, Map: 1/25/2022
 Scale: 1" = 100'