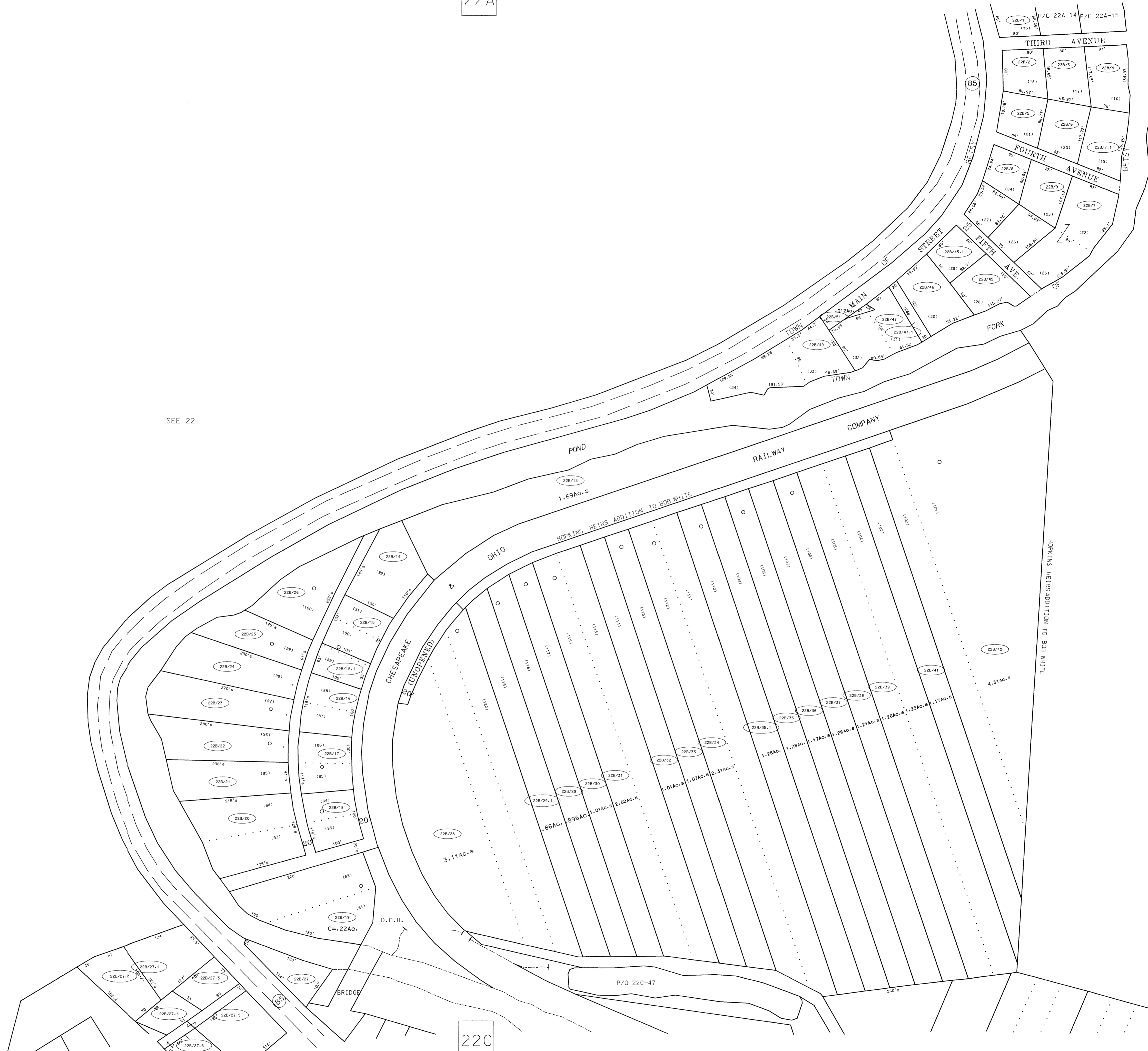


22A

SEE 22

22C

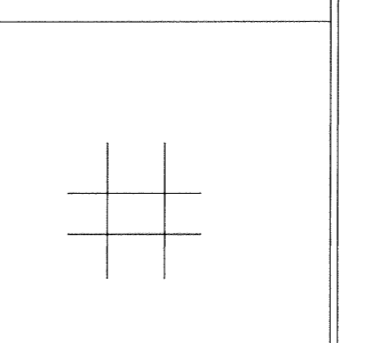


For Tax Purposes Only  
 Prepared by  
 McKenzie Engineering Corporation  
 402 Church Street  
 Summersville, WV 26651

LEGEND		REVISIONS	
Property line	—————	1	
Edge of pavement or roadway	—————	2	
Corporation line	—————	3	
District line	—————	4	
County line	—————	5	
Original lot line	-----	6	
Deed lot number	(15)	7	
Parcel or index number	(10)	8	
Improvement	o		
Railroad	—————		

RESTRICTION	

All tax maps created under the provisions of reappraisal legislation are the property of the Assessor of Boone County, West Virginia and the reproduction, copying, modification, distribution or sale of such tax maps or any copies thereof without the written permission of the Boone County Assessor is prohibited by law



BOONE COUNTY  
 STATE OF WEST VIRGINIA  
 Office of Assessor

CROOK DISTRICT  
 MAP NO: 22B  
 Date, Aerial Photography: 4-25-62  
 Photo No: 57-14868/1487  
 57-14858/1486  
 Date, Map: 4-23-63  
 Scale: 1"=100'