

FOR TAX PURPOSES ONLY  
 Prepared By  
 Clay County Assessor's Office  
 Clay, West Virginia

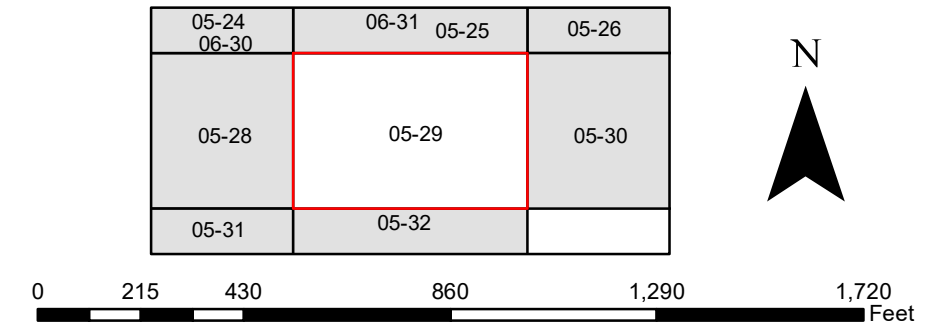
This tax map was compiled for the purpose of taxation from available record evidence and has not been field verified. This map is not a valid survey plat and the data on the map does not imply any official status to such data. The State of West Virginia and the Clay County Assessor's Office assume no liability that might result from the use of this map.

**Legend**

Property Line	—	Original Lot Line	—
Road Right of Way	—	Lot Number	(15)
Corporation Line	—	Parcel Number	(99)
District Line	—	Water	—
County Line	—	Railroad	—

Revised	03/31/2021			
Revised	01/25/2022			

# CLAY COUNTY WEST VIRGINIA Office of Assessor



PLEASANT  
 Map: 29  
 Date, Aerial Photography: 2019  
 Date, Map: 1/25/2022  
 Scale: 1" = 400'