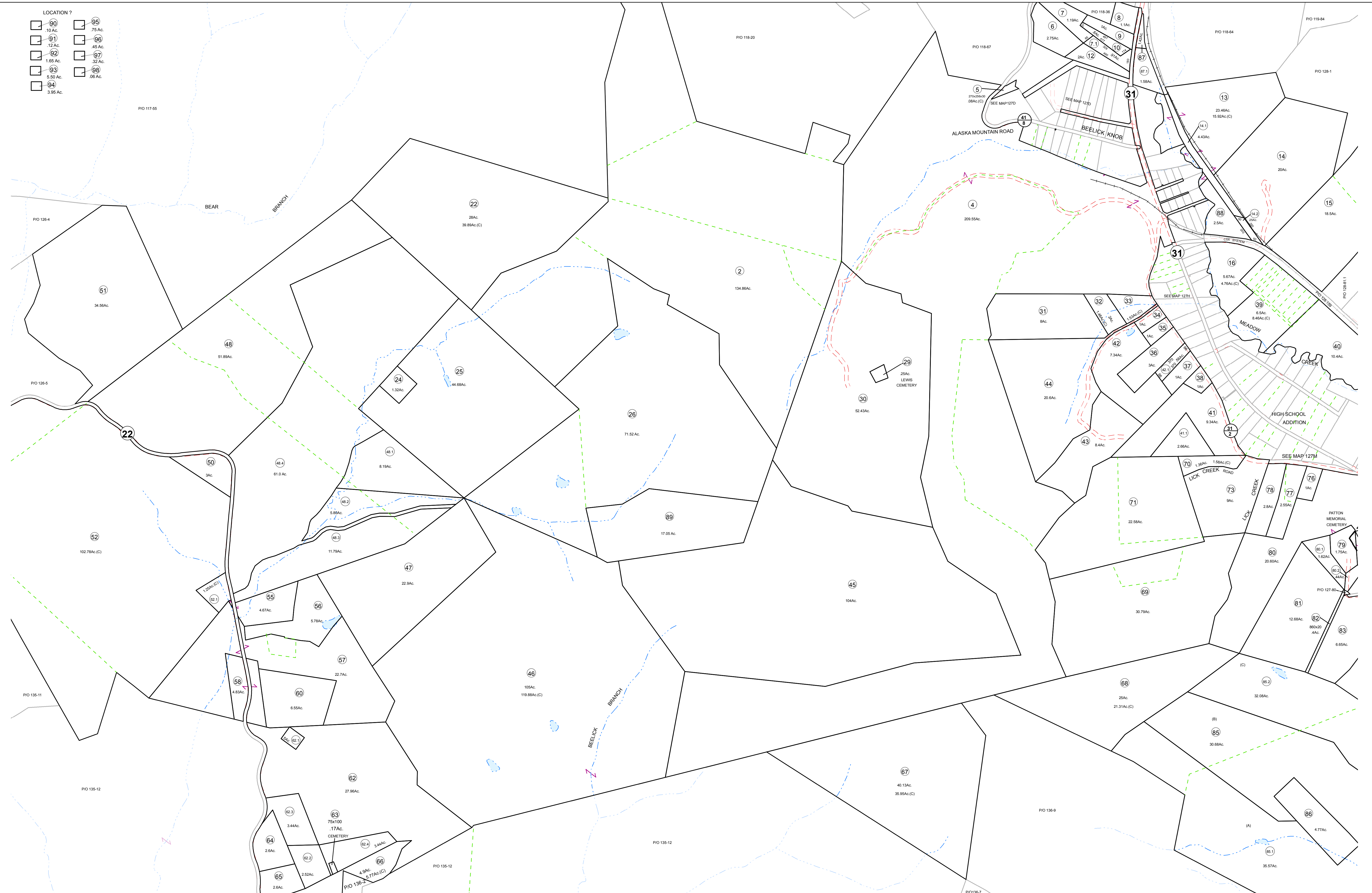


LOCATION ?

90 10 Ac.	95 75 Ac.
91 12 Ac.	96 45 Ac.
92 1.65 Ac.	97 32 Ac.
93 5.50 Ac.	98 06 Ac.
94 3.95 Ac.	



Prepared By
The Office Of The
Fayette County Assessor
100 Church Street
Fayetteville, WV 25840
FOR TAX PURPOSES ONLY

DISCLAIMER
This product is for tax purposes only and was not prepared for, nor is it suitable for, legal, engineering, or surveying purposes. Users of this information should review individual parcel records including deeds, survey maps or plats, and legal property descriptions for definitive parcel location information. This map is not a valid survey plat and the data on this map does not imply any official status to such data. The State of West Virginia and county assessor's office assume no liability that might result from the use of this map.

LEGEND

Property Line	—	Deed Lot Number	(15)
Roadway	—	Parcel or Index Number	15
Water	—	Improvement	○
District/Corporation Line	—	Railroad	—
County Line	—	Scaled Dimension	123s
Land Hook	Z	Deeded Acreage	12.34Ac.
Original Lot Line/Interior Tract	—	Calculated Area	12.34Ac.(C)

REVISIONS

RESTRICTIONS

MAP KEY

01-109	01-110	01-111
01-117	01-118	01-119
01-126	01-127	01-128
01-135	01-136	01-137
01-141	01-142	

STATE OF WEST VIRGINIA
FAYETTE COUNTY
FAYETTEVILLE, WEST VIRGINIA
Coordinate System: NAD 1983, WV State Plane South

NEW HAVEN DISTRICT
MAP 127
Map Date: 9/7/2021
Scale: 1inch = 400 feet