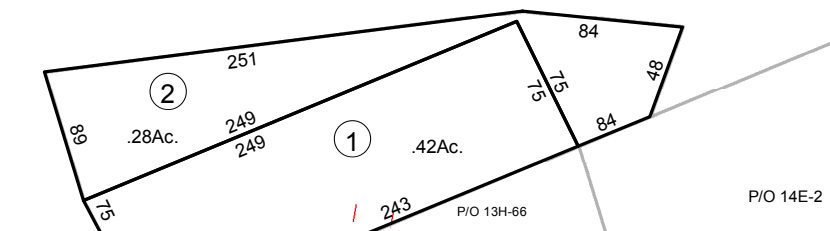




SEE MAP 13



Prepared By  
The Office Of The  
**Fayette County Assessor**  
100 Church Street  
Fayetteville, WV 25840  
**FOR TAX PURPOSES ONLY**

**DISCLAIMER**  
This product is for tax purposes only and was not prepared for, nor is it suitable for, legal, engineering, or surveying purposes. Users of this information should review individual parcel records including deeds, survey maps or plats, and legal property descriptions for definitive parcel location information. This map is not a valid survey plat and the data on this map does not imply any official status to such data. The State of West Virginia and county assessor's office assume no liability that might result from the use of this map.

**LEGEND**

Property Line	—
Roadway	—
Water	—
District/Corporation Line	—
County Line	—
Land Hook	—
Original Lot Line/Interior Tract	—

Deed Lot Number	(15)
Parcel or Index Number	15
Improvement	○
Railroad	—
Scaled Dimension	123s
Deeded Acreage	12.34Ac.
Calculated Area	12.34Ac.(C)

**REVISIONS**


**RESTRICTIONS**  
All tax maps created under the provisions of reappraisal legislation are the property of the Assessor of Fayette County, West Virginia and the reproduction, copying, modification, distribution, or sale of such tax maps or any copies thereof without the written permission of the Fayette County Assessor is prohibited by law.

**MAP KEY**

		02-7J
		02-7N
02-13C	02-13D	02-14A
02-13G	02-13H	02-14E
02-13L	02-13M	02-14J

STATE OF WEST VIRGINIA  
**FAYETTE COUNTY**  
FAYETTEVILLE, WEST VIRGINIA  
Coordinate System: NAD 1983, WV State Plane South

**PLATEAU DISTRICT MAP 13D**  
Map Date: 7/6/2021  
Scale: 1inch = 100 feet