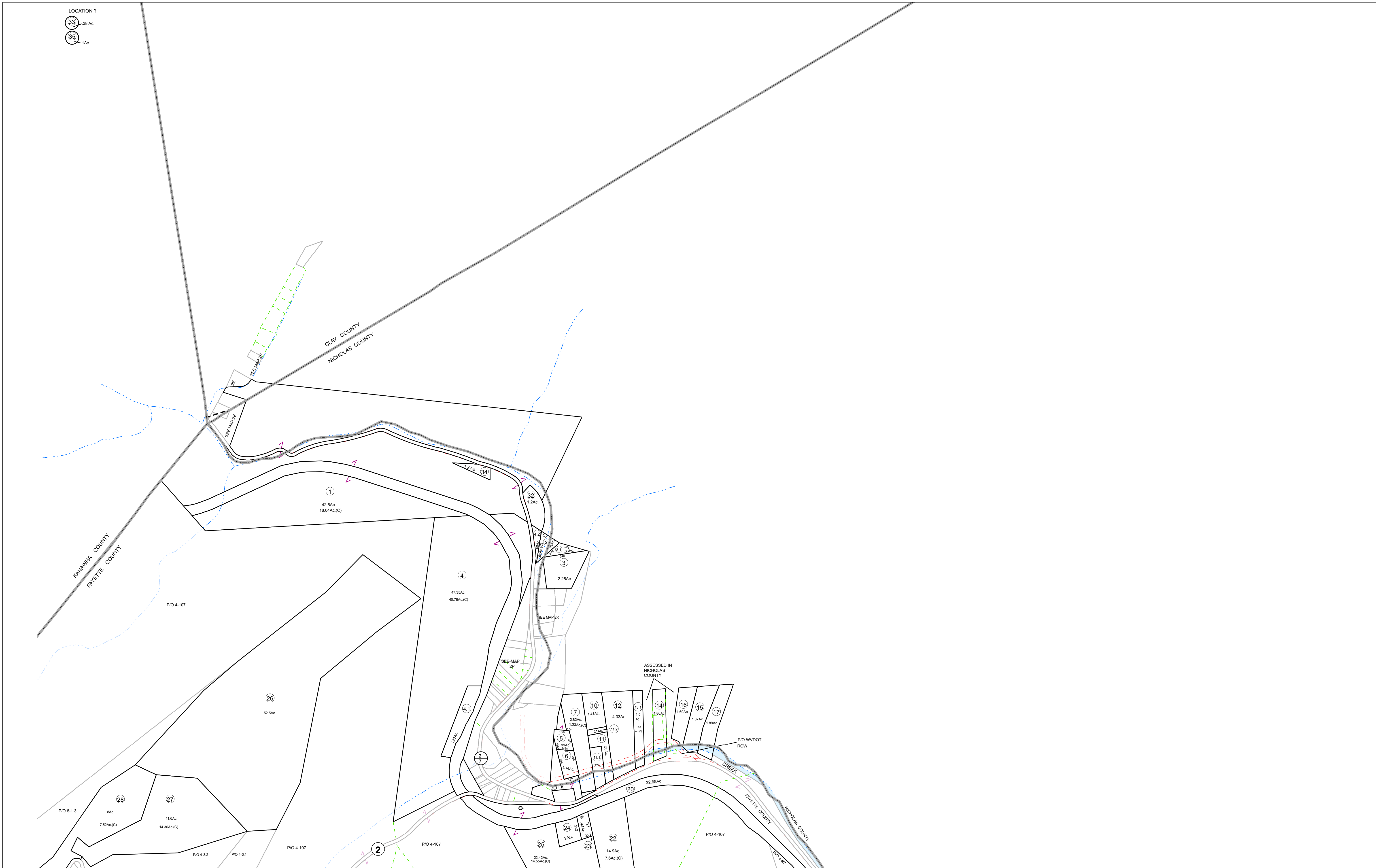


LOCATION ?
 33 38 Ac.
 35 1 Ac.



Prepared By
 The Office Of The
Fayette County Assessor
 100 Church Street
 Fayetteville, WV 25840
FOR TAX PURPOSES ONLY

DISCLAIMER
 This product is for tax purposes only and was not prepared for, nor is it suitable for, legal, engineering, or surveying purposes. Users of this information should review individual parcel records including deeds, survey maps or plats, and legal property descriptions for definitive parcel location information. This map is not a valid survey plat and the data on this map does not imply any official status to such data. The State of West Virginia and county assessor's office assume no liability that might result from the use of this map.

LEGEND

Property Line	—	Deed Lot Number	(15)
Roadway	—	Parcel or Index Number	⊙
Water	—	Improvement	—
District/Corporation Line	—	Railroad	—
County Line	—	Scaled Dimension	123s
Land Hook	—	Deeded Acreage	12.34Ac.(C)
Original Lot Line/Interior Tract	—	Calculated Area	12.34Ac.(C)

REVISIONS

RESTRICTIONS
 All tax maps created under the provisions of reappraisal legislation are the property of the Assessor of Fayette County, West Virginia and the reproduction, copying, modification, distribution, or sale of such tax maps or any copies thereof without the written permission of the Fayette County Assessor is prohibited by law.

MAP KEY

03-1	03-2
03-3	03-4
03-5	03-6
03-7	03-8
03-9	03-10

STATE OF WEST VIRGINIA
FAYETTE COUNTY
 FAYETTEVILLE, WEST VIRGINIA
 Coordinate System: NAD 1983, WV State Plane South

VALLEY DISTRICT MAP 2
 Map Date: 8/21/2020
 Scale: 1inch = 400 feet