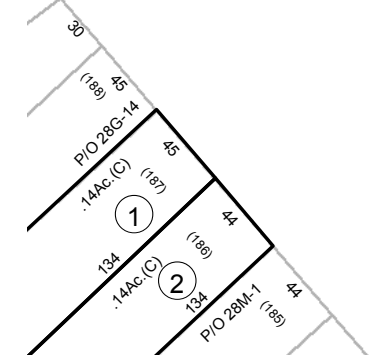




SEE MAP 28



Prepared By  
The Office Of The  
**Fayette County Assessor**  
100 Church Street  
Fayetteville, WV 25840  
**FOR TAX PURPOSES ONLY**

**DISCLAIMER**  
This product is for tax purposes only and was not prepared for, nor is it suitable for, legal, engineering, or surveying purposes. Users of this information should review individual parcel records including deeds, survey maps or plats, and legal property descriptions for definitive parcel location information. This map is not a valid survey plat and the data on this map does not imply any official status to such data. The State of West Virginia and county assessor's office assume no liability that might result from the use of this map.

LEGEND	
Property Line	—
Roadway	— — — —
Water	~ ~ ~ ~
District/Corporation Line	- - - -
County Line	— · — · — ·
Land Hook	— Z —
Original Lot Line/Interior Tract	- · - · - ·
Deed Lot Number	(15)
Parcel or Index Number	Ⓜ
Improvement	○
Railroad	—+—+—+—+—
Scaled Dimension	123s
Deeded Acreage	12.34Ac.
Calculated Area	12.34Ac.(C)

REVISIONS	

RESTRICTIONS	

MAP KEY	
11-15	11-16
11-10	11-11
03-28G 11-11	03-28H 11-17
11-18	03-28M
03-28R	03-28S

STATE OF WEST VIRGINIA  
**FAYETTE COUNTY**  
FAYETTEVILLE, WEST VIRGINIA  
Coordinate System: NAD 1983, WV State Plane South

**VALLEY DISTRICT**  
**MAP 28H**  
Map Date: 10/15/2018  
Scale: 1inch = 100 feet