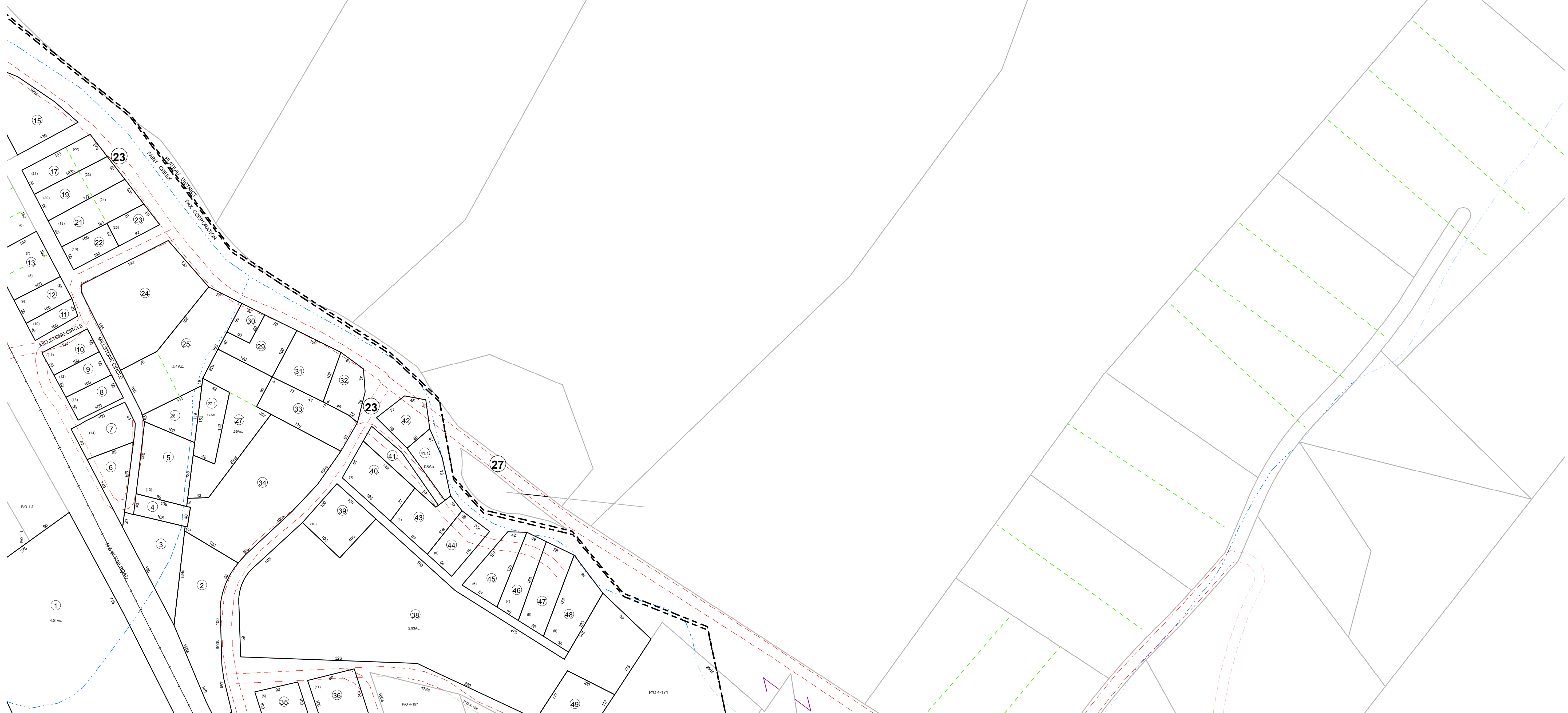


LOCATION 1
50
LOT # 6



Prepared By
The Office Of The
Fayette County Assessor
100 Church Street
Fayetteville, WV 25840
FOR TAX PURPOSES ONLY

DISCLAIMER
This product is for tax purposes only and was not prepared for, nor is it suitable for, legal, engineering, or surveying purposes. Users of this information should review individual parcel records including deeds, survey maps or plats, and legal property descriptions for definitive parcel location information. This map is not a valid survey plat and the data on this map does not imply any official status to such data. The State of West Virginia and county assessor's office assume no liability that might result from the use of this map.

LEGEND

Property Line	—	Deed Lot Number	(15)
Roadway	—	Parcel or Index Number	15
Water	—	Improvement	○
District/Corporation Line	—	Railroad	—
County Line	—	Scaled Dimension	123s
Land Hook	—	Deeded Acreage	12.34Ac.
Original Lot Line/Interior Tract	—	Calculated Area	12.34Ac.(C)

REVISIONS

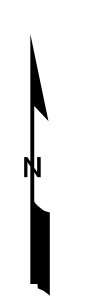
RESTRICTIONS

All tax maps created under the provisions of reappraisal legislation are the property of the Assessor of Fayette County, West Virginia and the reproduction, copying, modification, distribution, or sale of such tax maps or any copies thereof without the written permission of the Fayette County Assessor is prohibited by law.

MAP KEY

02-35N	
02-43A	
02-43E	10-2
10-1	
10-3	10-4
02-43P	

STATE OF WEST VIRGINIA
FAYETTE COUNTY
FAYETTEVILLE, WEST VIRGINIA
Coordinate System: NAD 1983, WV State Plane South



PAX CORPORATION
MAP 2
Map Date: 9/8/2020
Scale: 1inch = 100 feet