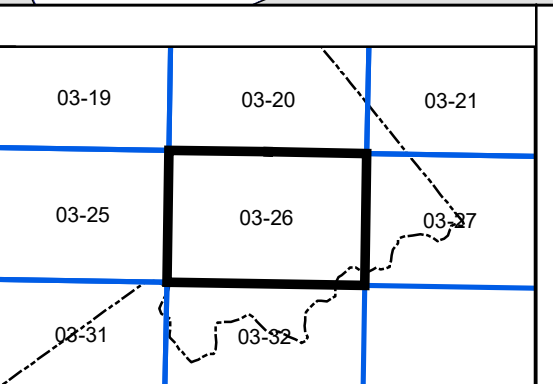


FOR TAX PURPOSES ONLY

Legend	
	District Boundary
	Previous Deed
	Property
	Road Easement
	Railroad Right of Way
	Road Right of Way
	River
	Dead lot Number (15)
	Parcel or Index Number (9)
	Unknown (4)
	Improvement (1)
	Cemetery (1)
	Church (1)
	Educational (1)

Restriction
 REPRODUCTION OF TAX MAPS PROHIBITED - It is unlawful to copy, photolopy, scan, photograph, or otherwise reproduce this tax map. Pursuant to the provisions of W.Va. CSR § 189-5-5 (2013) no person may reproduce, copy, distribute or sell copies of tax maps prepared by the counties without having first obtained the written permission of the Gilmer County Assessor. In addition to other penalties and civil remedies, any person who, without the written permission of the Gilmer County Assessor, reproduces, copies, distributes, or sells or who allows the reproduction, copying, distribution or sale of tax maps prepared by the Gilmer County Assessor, shall be refused permission by the Gilmer County Assessor or Assessor's agent to purchase tax maps in the future.

Revisions	
1 Revised 12/30/2016	10
2 Revised 12/30/2019	11
3 Revised 02/17/2021	12
4	13
5	14
6	15
7	16
8	17
9	18
19	28
20	29
21	30
22	31
23	32
24	33
25	34
26	35
27	36



Gilmer County
 Assessor's Office
 Melissa Jedamski, Assessor
 Gilmer, WV

GLENVILLE
 District: 03 Map No: 26
 Date of Publication: 1/28/2022
 Scale: 1" = 200'