

FOR TAX PURPOSES ONLY

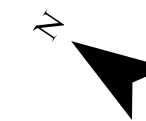
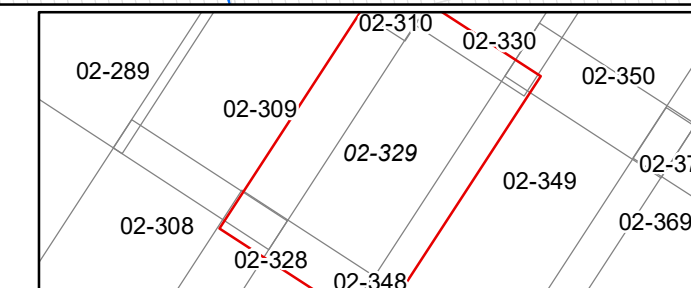
Prepared By:

Ralph Layton
Grant County Assessor

Legend	
Property Line	—
Road Right of Way	—
Corporation Line	—
District Line	—
County Line	—
Original Lot Line	—
Lot Number (15)	—
Parcel Number (99)	—
Water	—
Railroad	—

R	1	Revised 10/1/16	9	17
E	2	Revised 01/28/2022	10	18
V	3		11	19
I	4		12	20
S	5		13	21
I	6		14	22
O	7		15	23
N	8		16	24

STATE OF WEST VIRGINIA
COUNTY OF GRANT
Office of Assessor



GRANT
Map: 329

Date, Aerial Photography: 2015

Date, Map: 1/28/2022

Scale: 1" = 400'