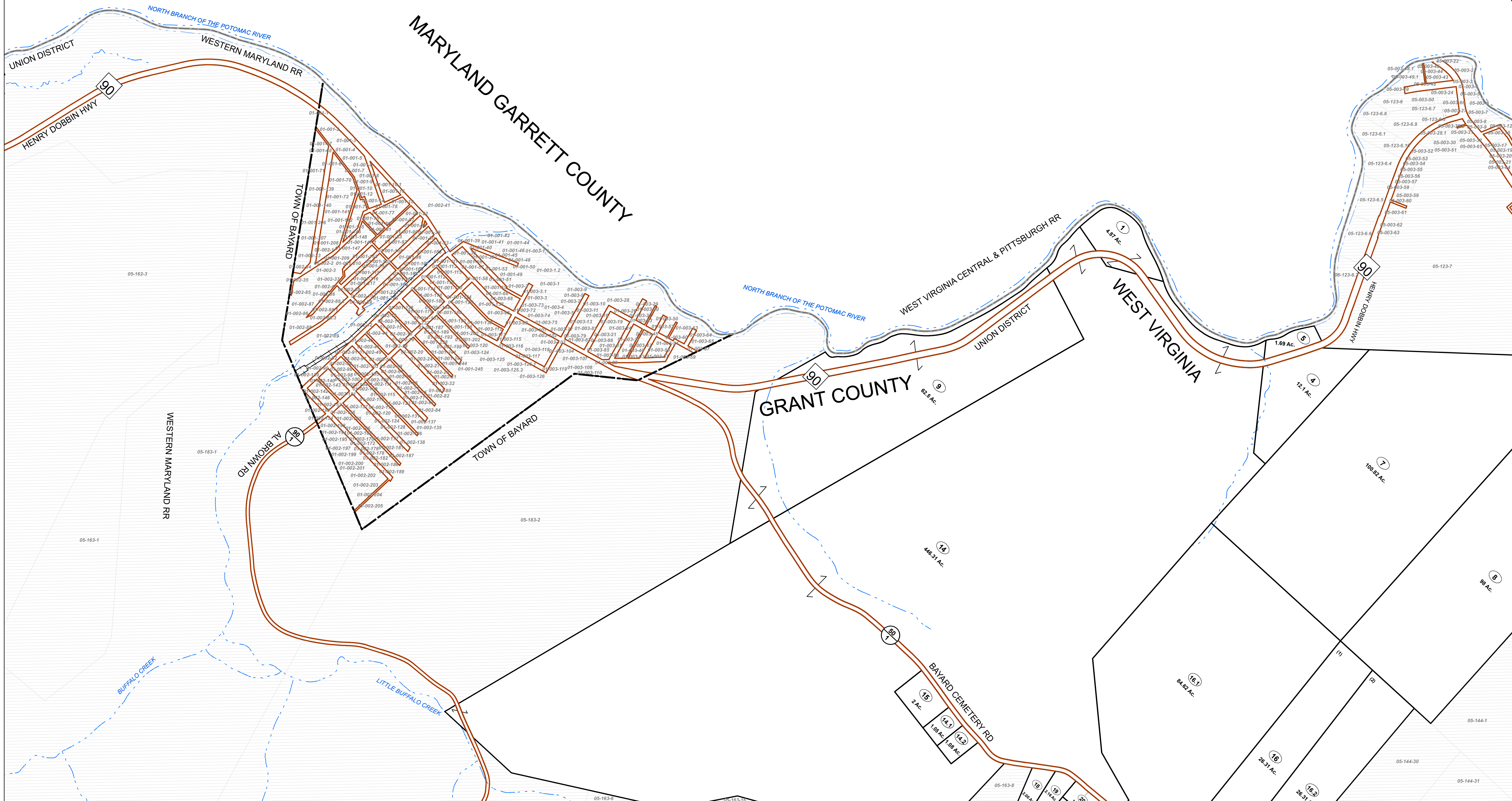


GARRETT COUNTY

MARYLAND



FOR TAX PURPOSES ONLY

Prepared By:

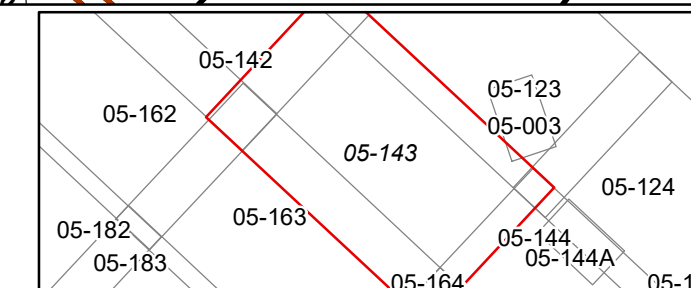
Ralph Layton
Grant County Assessor

Legend

Property Line	Original Lot Line
Road Right of Way	Lot Number (15)
Corporation Line	Parcel Number (99)
District Line	Water
County Line	Railroad

R	1	Revised 10/1/16	9	17
B	2	Revised 01/28/2023	10	18
V	3		11	19
I	4		12	20
S	5		13	21
I	6		14	22
O	7		15	23
N	8		16	24

STATE OF WEST VIRGINIA
COUNTY OF GRANT
Office of Assessor



UNION
Map: 143

Date, Aerial Photography: 2015

Date, Map: 1/28/2022

Scale: 1" = 400'