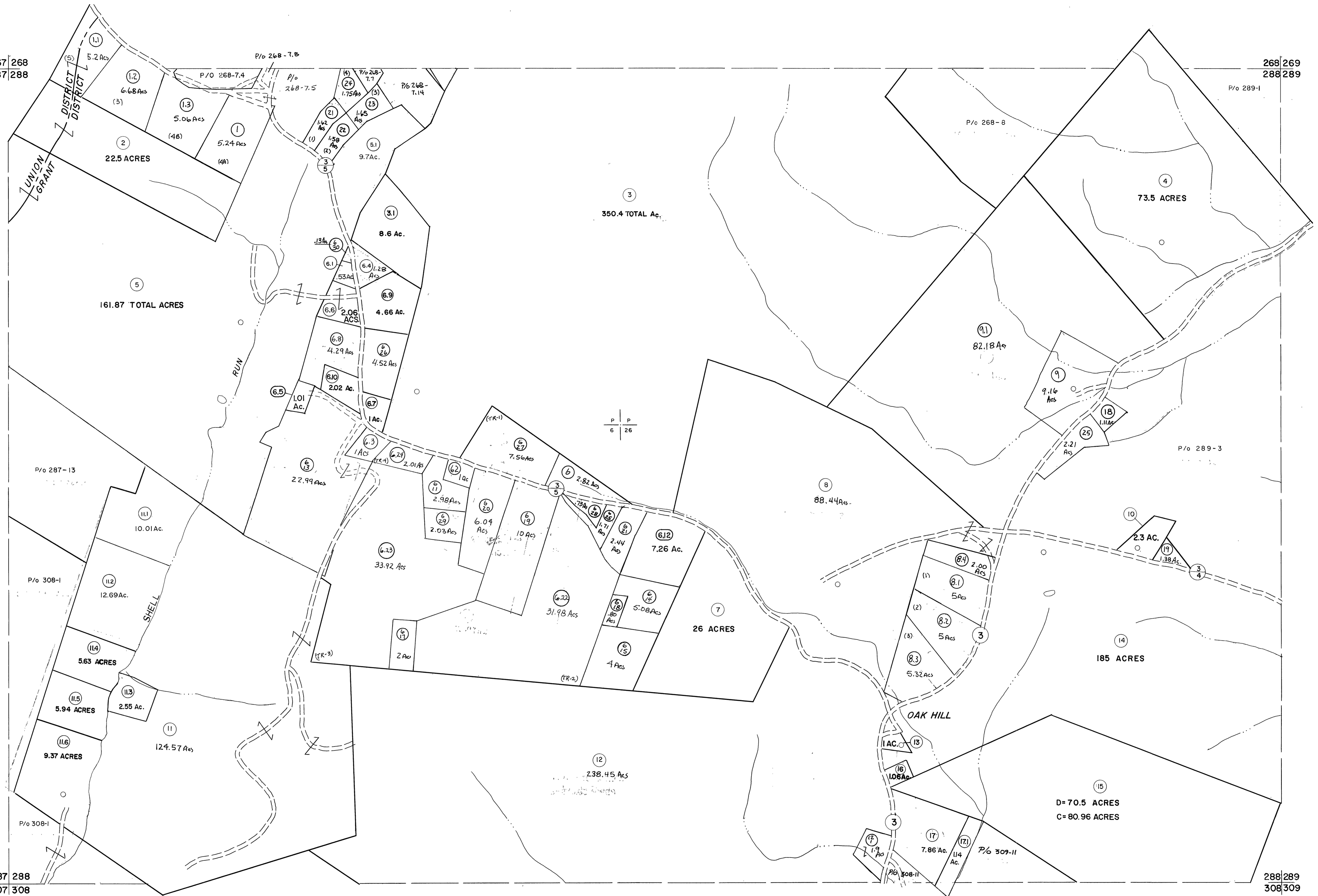


267 268  
287 288

268 269  
288 289

287 288  
307 308

288 289  
308 309



For Tax Purposes Only

Prepared by  
MICHAEL BAKER, JR., INC.  
Consulting Engineers  
Rochester, Pennsylvania

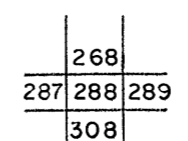
Legend

Property line	---	Original lot line	---
Edge of pavement or roadway	---	Deed lot number	(15)
Corporation line	---	Parcel or index number	(22)
District line	---	Improvement	o
County line	---	Railroad	---

Revisions

1	5/24/73	MARSHALL	9	July 1984	TRL	17	EXCALIBUR	7/04
2	4-14-75	T.G.	10	July, 1986	TRL	18	EXCALIBUR	7/05
3	9-3-76	T.B.	11	Revised to 7-19-87	DF	19	EXCALIBUR	07/07
4	11-23-80	SC	12	EXCALIBUR GRAPHICS	7/91	20	EXCALIBUR	7/08
5	12-29-80	SC	13	EXCALIBUR GRAPHICS	7/92	21	EXCALIBUR	7/09
6	Revised to 7-81	DF	14	EXCALIBUR	1/99	22	EXCALIBUR	7/10
7	JULY, 1982	TRL	15	EXCALIBUR	6/99	23	EXCALIBUR	10/11
8	REV. TO 7-1-83	NCS	16	EXCALIBUR	7/03	24	EXCALIBUR	7/2015

KEY MAP



GRANT COUNTY  
STATE OF WEST VIRGINIA  
Office of Assessor

DISTRICT

GRANT-UNION

SHEET NO: 288

Date, Aerial Photography: November, 1961 Date, Map: Dec, 1962  
Photo No: Scale: 1" = 400'