

FOR TAX PURPOSES ONLY

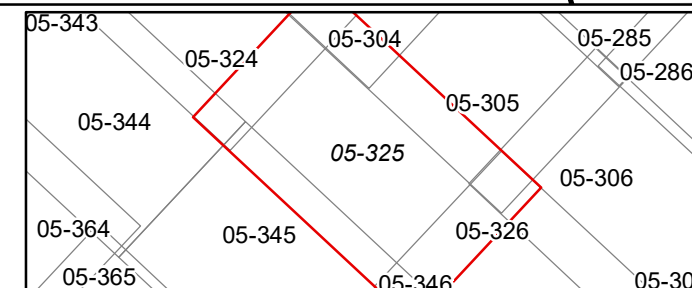
Prepared By:  
**Ralph Layton**  
 Grant County Assessor

**Legend**

Property Line	—	Original Lot Line	—
Road Right of Way	—	Lot Number	(15)
Corporation Line	—	Parcel Number	(99)
District Line	—	Water	—
County Line	—	Railroad	—

R	1	Revised 10/1/16	9		17
O	2	Revised 01/28/2022	10		18
V	3		11		19
I	4		12		20
S	5		13		21
I	6		14		22
O	7		15		23
N	8		16		24

**STATE OF WEST VIRGINIA**  
**COUNTY OF GRANT**  
 Office of Assessor



UNION  
 Map: 325  
 Date, Aerial Photography: 2015  
 Date, Map: 1/28/2022  
 Scale: 1" = 400'