

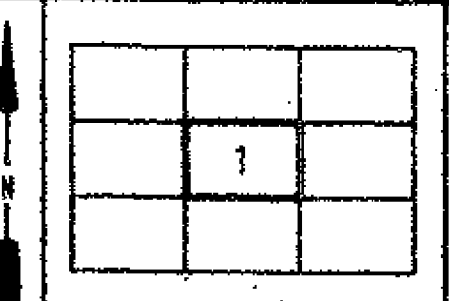
West Virginia State Tax Department  
 For Tax Purposes Only  
 Base Mapping - Prepared by  
 Pentrow, Inc.  
 Oak Hill, West Virginia  
 Control Mapping - Prepared by  
 Brackenrich & Associates, Inc.  
 Lewisburg, West Virginia

LEGEND	
Property line	(11)
Roadway	(12)
Water	(13)
Cooperation line	(14)
District line	(15)
County line	(16)
State line	(17)
Land hook	(18)
Original lot line or interior tract	(19)
Dead lot number	(20)
Parcel or index number	(21)
Improvement	(22)
Railroad	(23)
Section dimension	(24)
Dead	(25)
Calculated area	(26)

**RESTRICTION**

All tax maps created under the provisions of reappraisal legislation are the property of the State of West Virginia and the reproduction, copying, distribution or sale of such tax maps or any copies thereof without the written permission of the State Tax Commissioner is prohibited by law.

REVISIONS	



**GREENBRIER COUNTY**  
 STATE OF WEST VIRGINIA  
 Lewisburg, West Virginia

**GREENBRIER COUNTY**  
 INDEX MAP  
 Scale: 1" = 10,560' (TWO MILES)