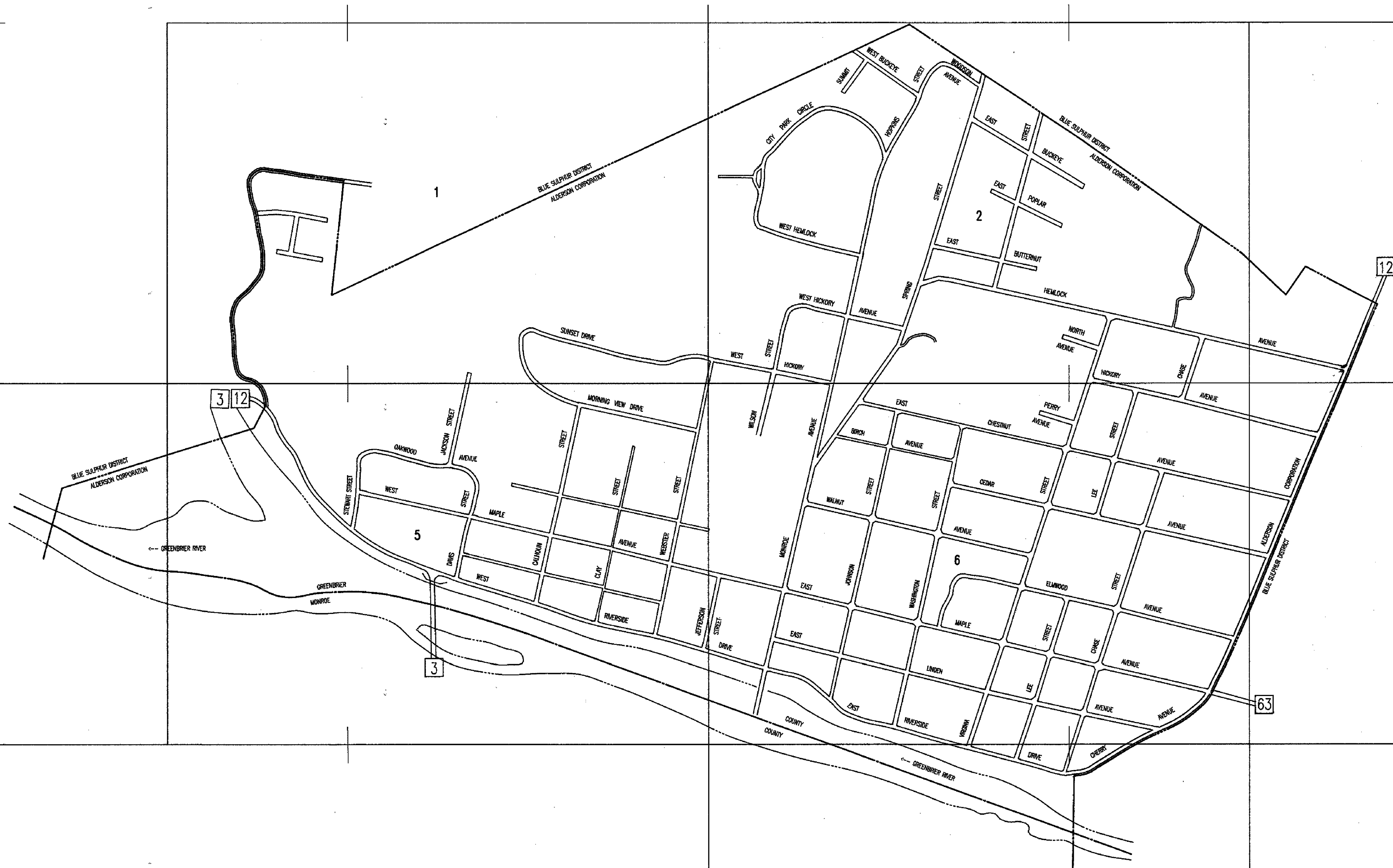


270,000  
2,087,000

270,000  
2,109,000

262,000  
2,087,000

262,000  
2,109,000



West Virginia State Tax Department

For Tax Purposes Only  
Base Mapping - Prepared By  
**Pentree, Inc.**  
Oak Hill, West Virginia  
Cadastral Mapping - Prepared By  
Brackenrich & Associates, Inc.

LEGEND

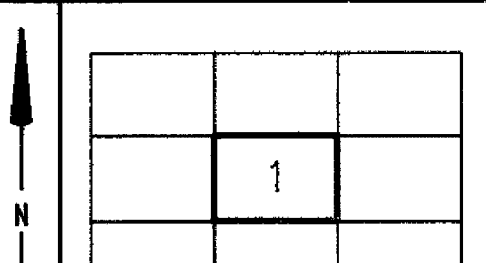
Property line		Original lot line or interior tract	
Roadway		Deed lot number	(15)
Water		Parcel or index number	⊙
Corporation line		Improvement	○
District line		Railroad	
County line		Scaled dimension	

RESTRICTION

All tax maps created under the provisions of reappraisal legislation are the property of the State of West Virginia and the reproduction, copying, distribution or sale of such tax maps or any copies thereof without the written permission of the State

REVISIONS

To	7-1-87	JLB



**GREENBRIER COUNTY**  
STATE OF WEST VIRGINIA

**ALDERSON CORPORATION**  
INDEX  
SHEET 1 of 1