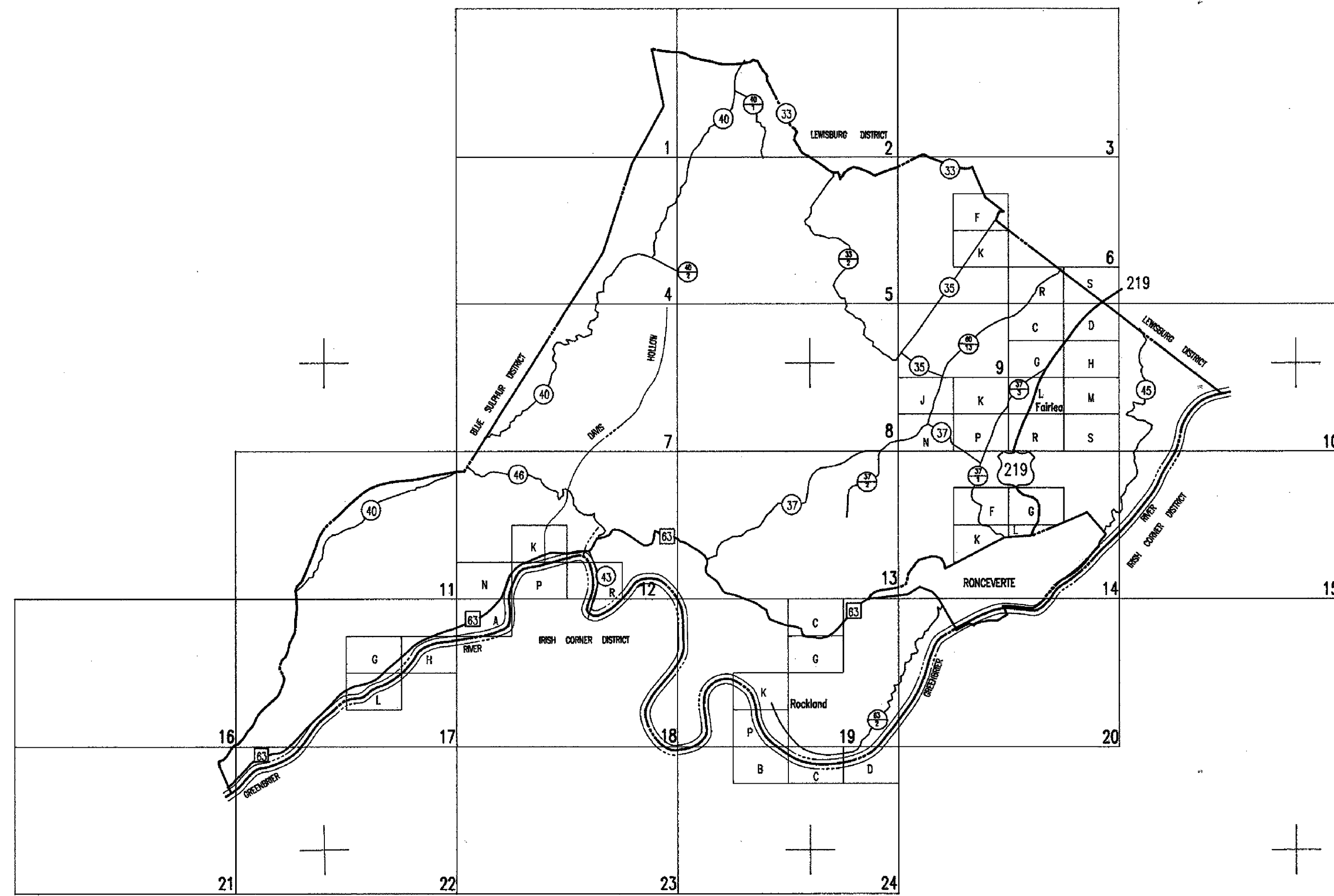


337,800  
2,094,000

337,800  
2,222,400



2,094,000  
232,000

2,222,400  
232,000

West Virginia State Tax Department  
For Tax Purposes Only  
Base Mapping - Prepared By  
**Pentree, Inc.**  
Oak Hill, West Virginia  
Cadastral Mapping - Prepared By  
**Brackenrich & Associates, Inc.**

LEGEND

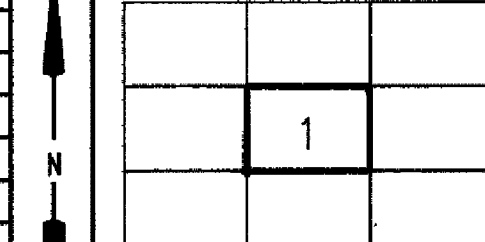
Property line	—
Roadway	—
Water	—
Corporation line	—
District line	—
County line	—

Original lot line or interior tract	(15)
Deed lot number	Ⓢ
Parcel or index number	Ⓢ
Improvement	○
Railroad	—+—+—+—+—
Scaled dimension	s

RESTRICTION

All tax maps created under the provisions of reappraisal legislation are the property of the State of West Virginia and the reproduction, copying, distribution or sale of such tax maps or any copies thereof without the written permission of the State

REVISIONS

**GREENBRIER COUNTY**  
STATE OF WEST VIRGINIA

**FORT SPRING**  
INDEX  
MAP