

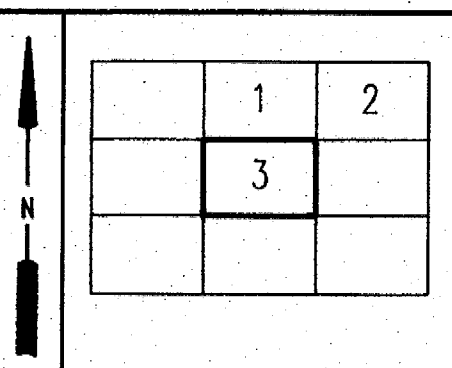
West Virginia State Tax Department
 For Tax Purposes Only
 Base Mapping - Prepared By
Pentree, Inc.
 Oak Hill, West Virginia
 Cadastral Mapping - Prepared By
Brackenrich & Associates, Inc.
 Lewisburg, West Virginia

LEGEND	
Property line	—
Roadway	—
Water	—
Corporation line	—
District line	—
County line	—
State line	—
Land hook	—
Original lot line or interior tract	(15)
Deed lot number	⊙
Parcel or index number	○
Improvement	+
Railroad	—+—+—+—
Scaled dimension	+
Deed	(0)
Calculated area	(C)

RESTRICTION

All tax maps created under the provisions of reappraisal legislation are the property of the State of West Virginia and the reproduction, copying, distribution or sale of such tax maps or any copies thereof without the written permission of the State Tax Commissioner is prohibited by law.

REVISIONS	



GREENBRIER COUNTY
 STATE OF WEST VIRGINIA
 Lewisburg, West Virginia

RONCEVERTE CORPORATION
 INDEX
 SHEET 3 of 3
 Scale: 1" = 400'