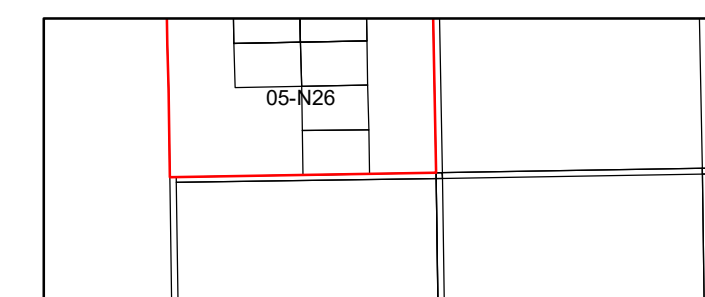


THIS DOCUMENT IS A TAX MAP: It was compiled for purposes of taxation from available record evidence and has not been field verified. This map is not a valid survey plat. The existence of data on this document does not imply any "official" status to such data. The W.V. State Tax Dept. and the Hancock County Assessor's Office assume no liability that might result from use of this document.

Legend	
Property Line	Original Lot Line
Road Right of Way	Lot Number (15)
Corporation Line	Parcel Number (99)
District Line	Water
County Line	Railroad
Road	Home/Commercial Building

R	1	Revised 07/20/2020	9	17
V	2	Revised 2/20/2021	10	18
I	3	Revised 1/25/2022	11	19
S	4		12	20
I	5		13	21
O	6		14	22
N	7		15	23
S	8		16	24

STATE OF WEST VIRGINIA
HANCOCK COUNTY ASSESSOR
 New Cumberland, West Virginia
 Joseph M. Alongi, Assessor



NEW CUMBERLAND
 Map: N26
 Date, Aerial Photography: 2003
 Date, Map: 1/25/2022
 Scale: 1" = 400'