

OHIO RIVER

MARY

30

156.894 Ac

6-W38S-26

6-W42-2

6-W38S-262

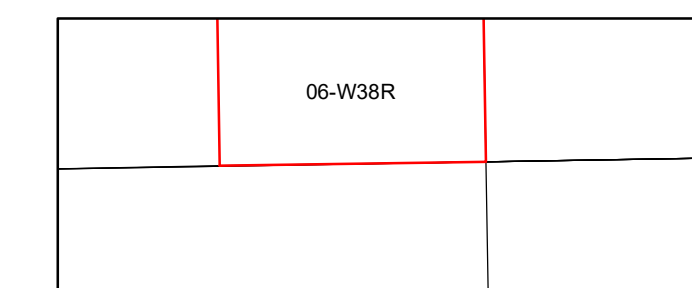
6-W38S-23.2

THIS DOCUMENT IS A TAX MAP: It was compiled for purposes of taxation from available record evidence and has not been field verified. This map is not a valid survey plat. The existence of data on this document does not imply any "official" status to such data. The W.V. State Tax Dept. and the Hancock County Assessor's Office assume no liability that might result from use of this document.

Legend	
Property Line	Original Lot Line
Road Right of Way	Lot Number (15)
Corporation Line	Parcel Number (99)
District Line	Water
County Line	Railroad
Road	Home/Commercial Building

R	1	Revised 07/20/2020	9		17	
O	2	Revised 2/9/2021	10		18	
V	3	Revised 1/25/2022	11		19	
J	4		12		20	
S	5		13		21	
I	6		14		22	
O	7		15		23	
N	8		16		24	

**STATE OF WEST VIRGINIA**  
**HANCOCK COUNTY ASSESSOR**  
 New Cumberland, West Virginia  
 Joseph M. Alongi, Assessor



WEIRTON  
 Map: W38R

Date, Aerial Photography: 2003  
 Date, Map: 1/25/2022  
 Scale: 1" = 100'