

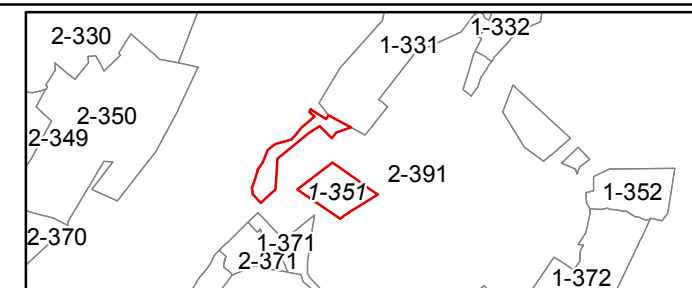
FOR TAX PURPOSES ONLY
Prepared by Hardy County, WV

Legend

Property Line	—	Original Lot Line	- - - - -
Road Right of Way	—	Lot Number	(15)
Corporation Line	—	Parcel Number	(99)
District Line	- - - - -	Water	—
County Line	- - - - -	Railroad	—

R	1	Revised 7/8/2014	9		17
e	2		10		18
v	3		11		19
i	4		12		20
s	5		13		21
j	6		14		22
o	7		15		23
n	8		16		24

STATE OF WEST VIRGINIA
COUNTY OF HARDY
Office of Assessor



CAPON
SHEET 351
Date, Aerial Photography: 2003
Date, Map: 1/19/2022
Scale: 1" = 400'