

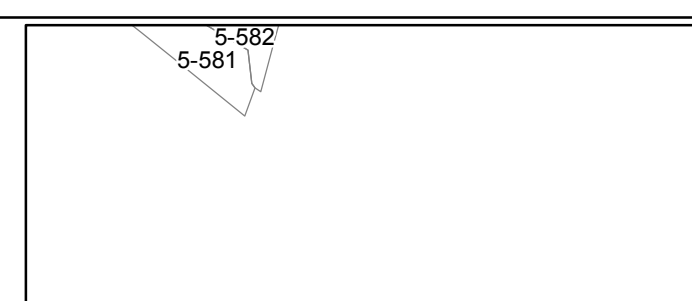
FOR TAX PURPOSES ONLY
Prepared by Hardy County, WV

Legend

Property Line	Original Lot Line	Lot Number	(15)
Road Right of Way	Corporation Line	Parcel Number	(99)
District Line	County Line	Water	Railroad

R	1	Revised 7/8/2014	9	17
O	2		10	18
V	3		11	19
J	4		12	20
S	5		13	21
I	6		14	22
O	7		15	23
N	8		16	24

STATE OF WEST VIRGINIA
COUNTY OF HARDY
Office of Assessor



SOUTHFORK
SHEET 602
Date, Aerial Photography: 2003
Date, Map: 1/19/2022
Scale: 1" = 400'