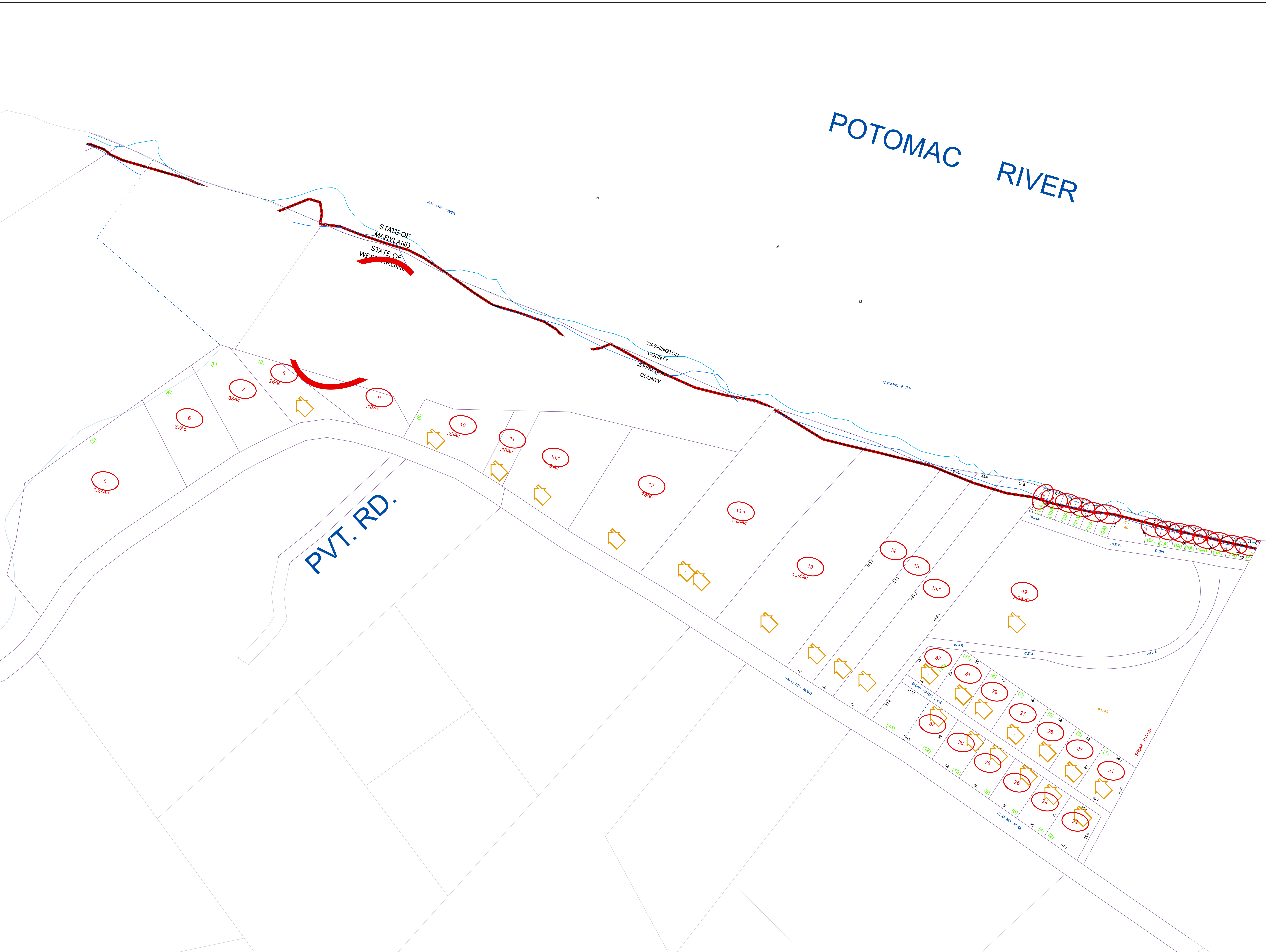
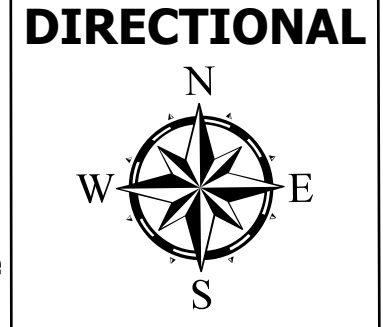


# POTOMAC RIVER



**FOR TAX PURPOSES ONLY**  
 PREPARED BY  
**JEFFERSON COUNTY ASSESSOR'S OFFICE**  
 NOTE: Maps are updated constantly by the mapper. However, maps are only printed at the beginning of the fiscal year.



**Tax Year: 2022**  
**Date Printed: 1/19/2022**  
 Assessor: Angela Banks  
 Mapping Specialist: Victoria (Tori) Myers)

**LEGEND**

	PROPERTY LINE
	CORPORATION LINE
	DISTRICT LINE
	COUNTY LINE
	STREAM
	EASEMENT
	ORIGINAL LOT LINE
	RAILROAD

LOT NUMBER	(16)
TAX PARCEL NUMBER	(15)
IMPROVEMENT	(14)
PP MOBILE HOME	(13)
DISTRICT NUMBER	(12)

**REVISIONS**  
 REVISIONS OUTGREW THIS SPACE AND ARE NOW MAINTAINED IN A DATABASE

**KEY MAP**

2	2	2
2	2-1	2
22	2	2

**COUNTY OF JEFFERSON**  
**OFFICE OF THE ASSESSOR**  
**CHARLES TOWN, WV**

**HARPERS FERRY DISTRICT**  
**DISTRICT 4**  
**MAP 2-1**  
 Date Aerial Photography: 12/31/1962  
 Photo No.:  
 Date Map Created: 4/23/1963