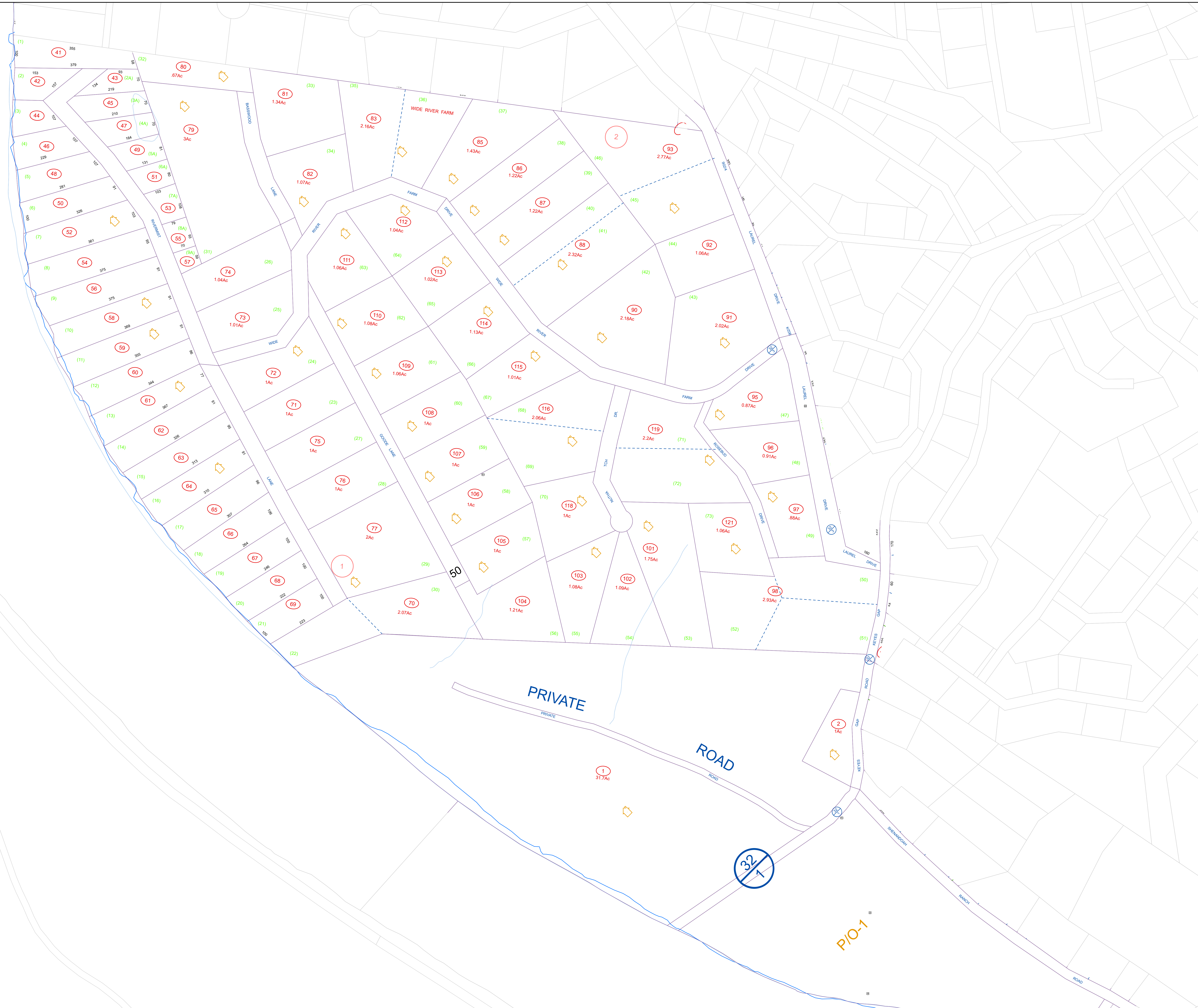
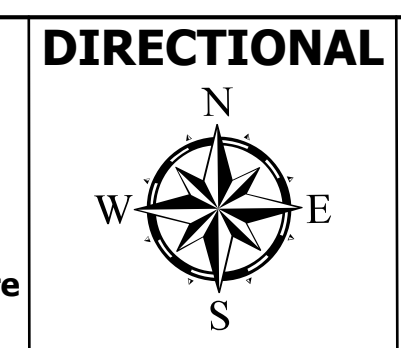


SHENANDOAH RIVER



**FOR TAX PURPOSES ONLY**  
 PREPARED BY  
**JEFFERSON COUNTY ASSESSOR'S OFFICE**  
 NOTE: Maps are updated constantly by the mapper. However, maps are only printed at the beginning of the fiscal year.



**Tax Year: 2022**  
**Date Printed: 1/19/2022**  
 Assessor: Angela Banks  
 Mapping Specialist: Victoria (Tori) Myers

**LEGEND**

	PROPERTY LINE		LOT NUMBER (16)
	CORPORATION LINE		TAX PARCEL NUMBER (3, 4)
	DISTRICT LINE		IMPROVEMENT (1)
	COUNTY LINE		PP MOBILE HOME (2)
	STREAM		DISTRICT NUMBER (2)
	EASEMENT		
	ORIGINAL LOT LINE		
	RAILROAD		

**REVISIONS**  
 REVISIONS OUTGREW THIS SPACE AND ARE NOW MAINTAINED IN A DATABASE

**KEY MAP**

13	13	13
13	13-2	13
133	13	13

**COUNTY OF JEFFERSON**  
**OFFICE OF THE ASSESSOR**  
**CHARLES TOWN, WV**

**HARPERS FERRY DISTRICT**  
**DISTRICT 4**  
**MAP 13-2**  
 Date Aerial Photography: 12/31/1962  
 Photo No.: 11,29  
 Date Map Created: 4/23/1963