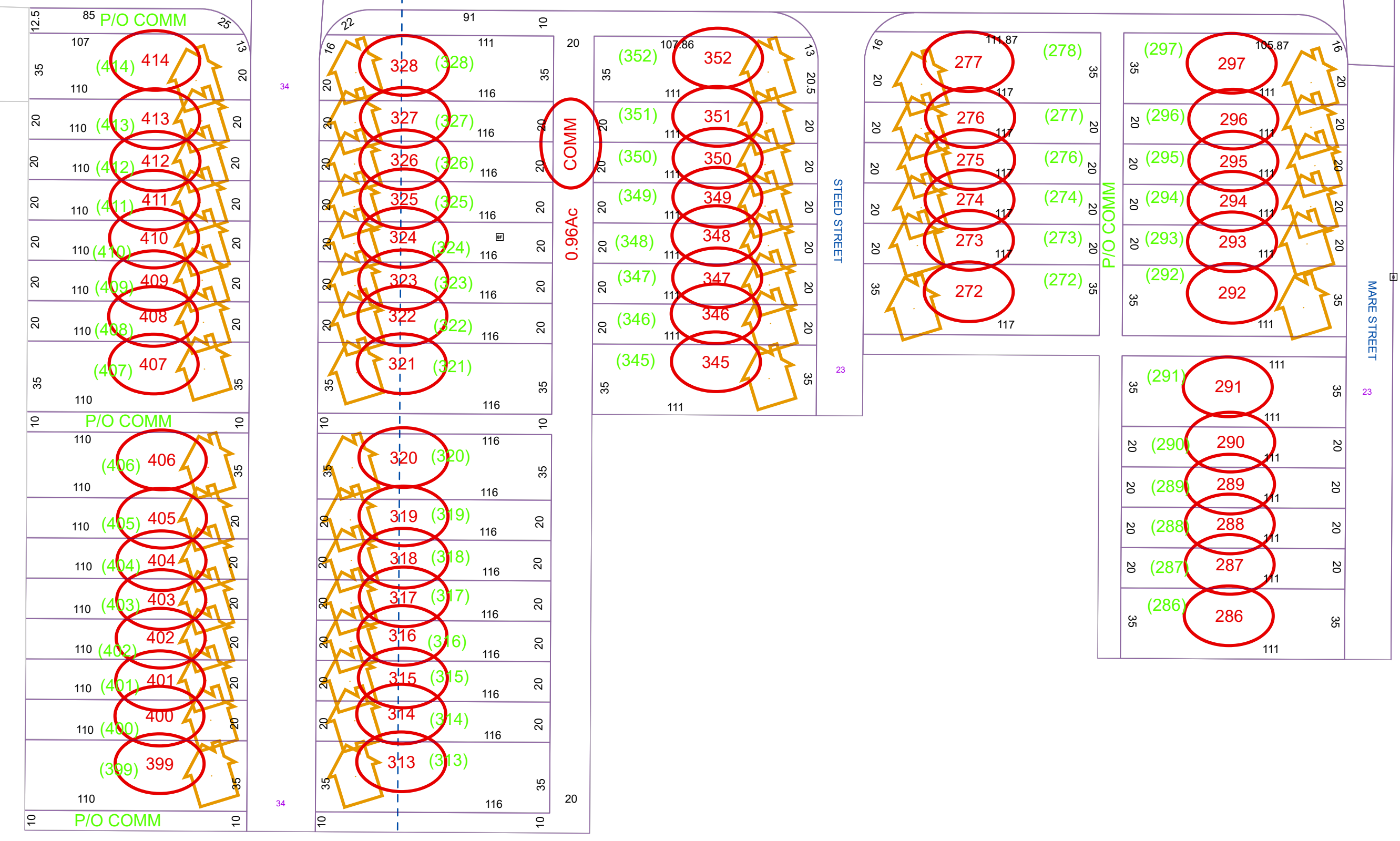
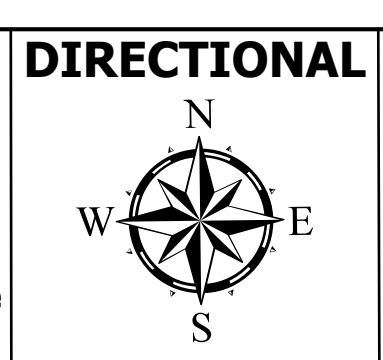


# 17TH AVENUE



**FOR TAX PUPOSES ONLY**  
 PREPARED BY  
**JEFFERSON COUNTY ASSESSOR'S OFFICE**  
 NOTE: Maps are updated constantly by the mapper. However, maps are only printed at the beginning of the fiscal year.



**Tax Year: 2022**  
**Date Printed: 1/19/2022**  
 Assessor: Angela Banks  
 Mapping Specialist: Victoria (Tori) Myers)

**LEGEND**

	PROPERTY LINE
	CORPORATION LINE
	DISTRICT LINE
	COUNTY LINE
	STREAM
	EASEMENT
	ORIGINAL LOT LINE
	RAILROAD

LOT NUMBER	(16)
TAX PARCEL NUMBER	(15)
IMPROVEMENT	(14)
PP MOBILE HOME	(13)
DISTRICT NUMBER	(12)

**REVISIONS**  
 REVISIONS OUTGREW THIS SPACE AND ARE NOW MAINTAINED IN A DATABASE

**KEY MAP**

8	8C	8
8	8F	8
88	8	8

**COUNTY OF JEFFERSON**  
**OFFICE OF THE ASSESSOR**  
**CHARLES TOWN, WV**

**RANSON CORPORATION**  
**DISTRICT 8**  
**MAP 8F**  
 Date Aerial Photography: [blank]  
 Photo No.: [blank]  
 Date Map Created: 3/25/2011