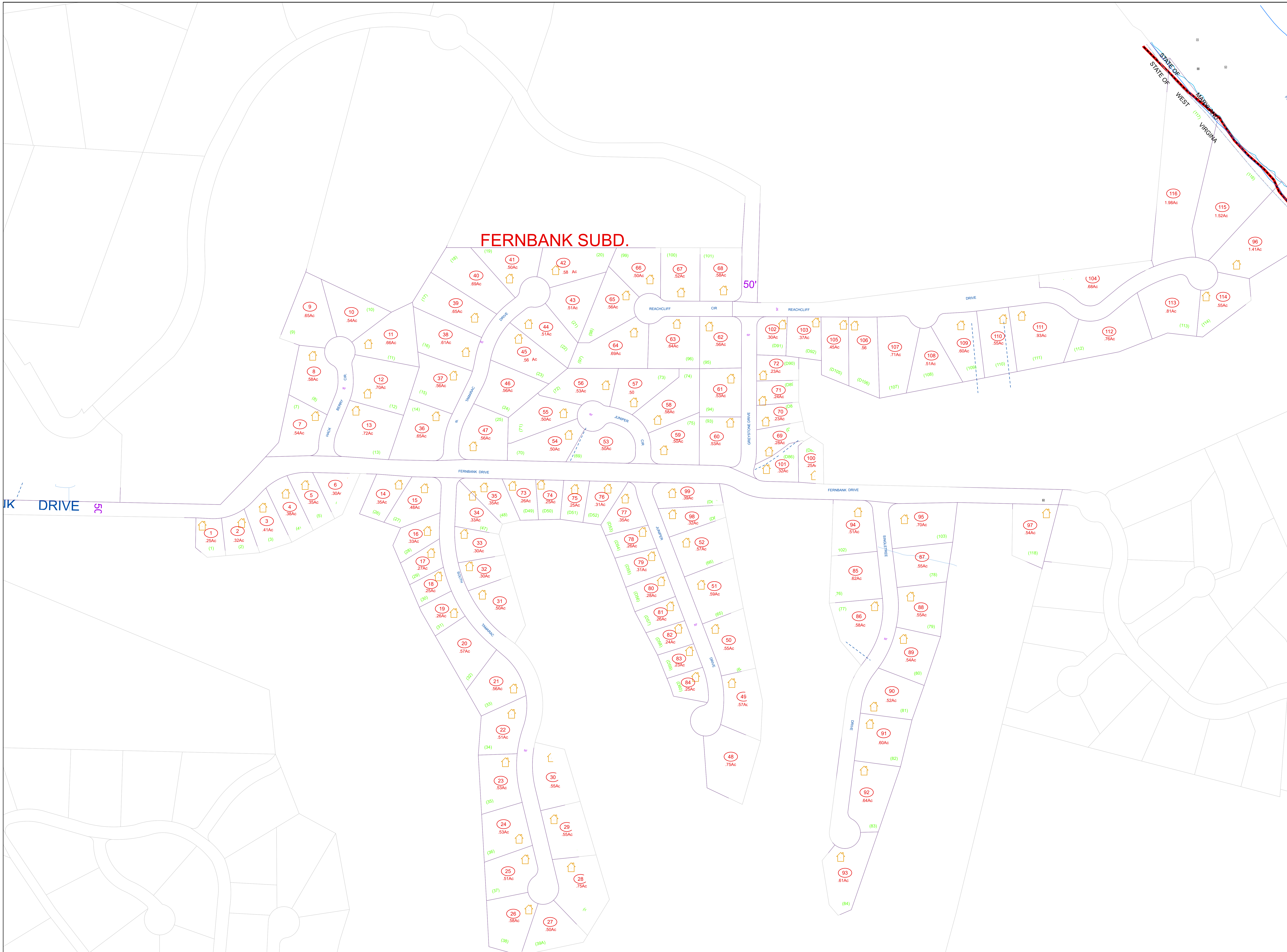
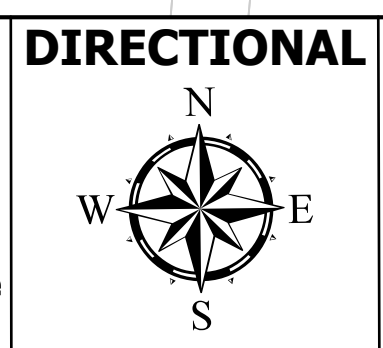


FERNBANK SUBD.



FOR TAX PURPOSES ONLY
 PREPARED BY
JEFFERSON COUNTY ASSESSOR'S OFFICE
 NOTE: Maps are updated constantly by the mapper. However, maps are only printed at the beginning of the fiscal year.



Tax Year: 2022
Date Printed: 1/19/2022
 Assessor: Angela Banks
 Mapping Specialist: Victoria (Tori) Myers

LEGEND

	PROPERTY LINE
	CORPORATION LINE
	DISTRICT LINE
	COUNTY LINE
	STREAM
	EASEMENT
	ORIGINAL LOT LINE
	RAILROAD

LOT NUMBER	(16)
TAX PARCEL NUMBER	(1-9)
IMPROVEMENT	
PP MOBILE HOME	
DISTRICT NUMBER	(2)

REVISIONS
 REVISIONS OUTGREW THIS SPACE AND ARE NOW MAINTAINED IN A DATABASE

KEY MAP

5	4
5	5B
55	5

COUNTY OF JEFFERSON
OFFICE OF THE ASSESSOR
CHARLES TOWN, WV

SHEPHERDSTOWN DISTRICT
DISTRICT 9
MAP 5B
 Date Aerial Photography: 12/31/1962
 Photo No.: 87,113
 Date Map Created: 8/1/1990