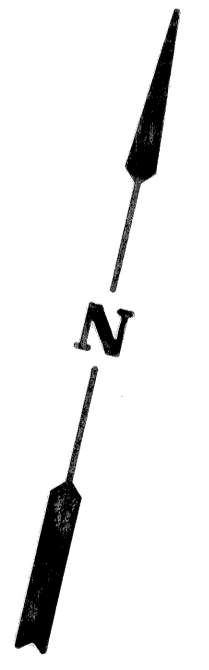
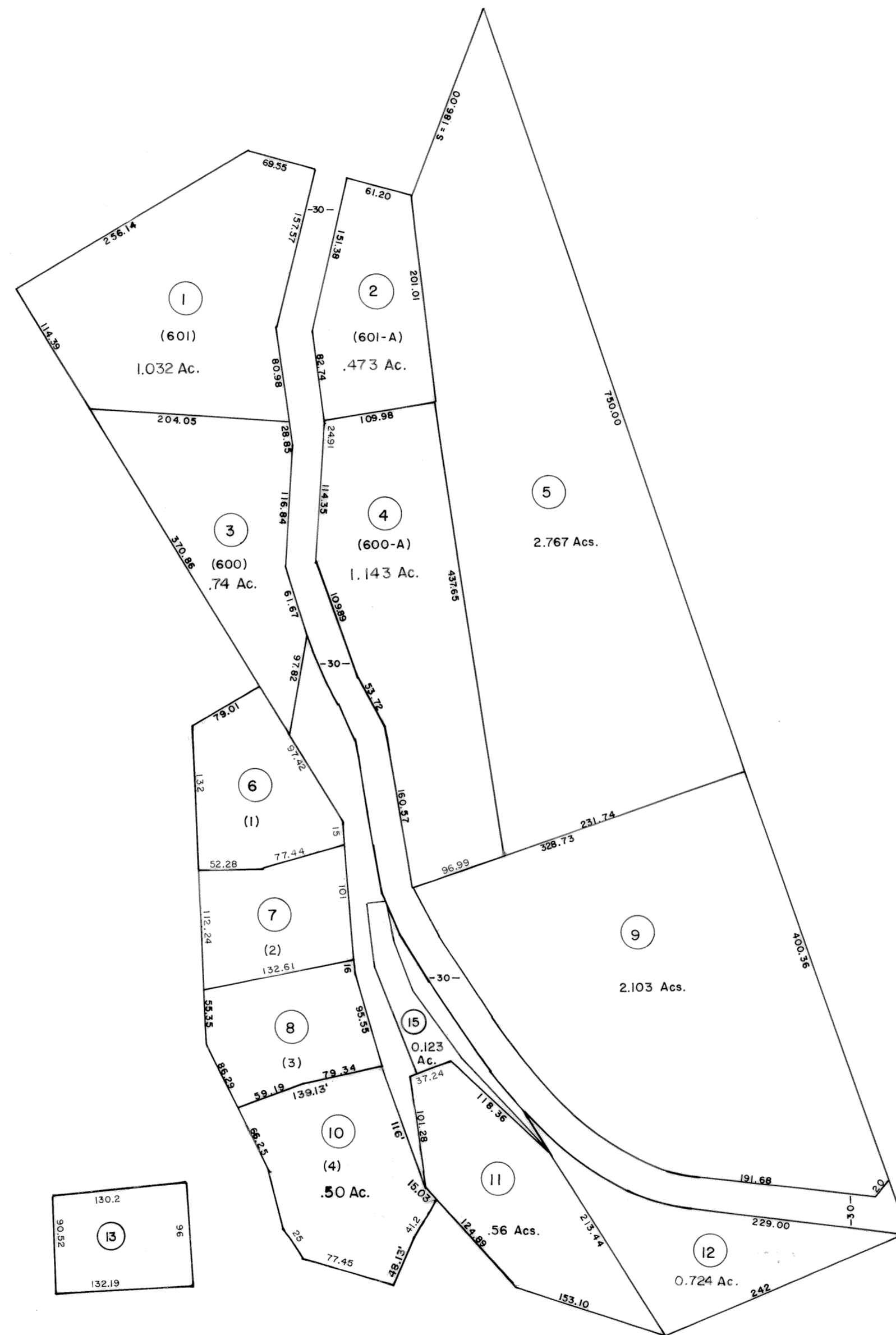


SHARKEY
HEIGHTS
SUB-DIVISION



For Tax Purposes Only

Prepared by
LOCAL GOVERNMENT RELATIONS DIV.
STATE TAX COMMISSIONER
CHARLESTON, W.VA.

LEGEND

Property line	—————	Original lot line	----- (15)
Edge of pavement or roadway	-----	Deed lot number	⊙
Corporation line	-----	Parcel or index number	⊙
District line	-----	Improvement	○
County line	-----	Railroad	—+—
State line	-----	Scaled dimension	(S)
Land hook	-----	Deed dimension	(D)
Water	~~~~~	Calculated area	(C)

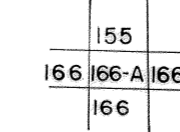
REVISIONS

7-1-86	S.P.H.
7-1-88	TRL
9-1-97	J.E.B.
7-1-2000	J.E.B.
9/3/07	S.G.H.

RESTRICTION

All tax maps created under the provisions of reappraisal legislation are the property of the State of West Virginia and the reproduction, copying, distribution or sale of such tax maps or any copies thereof without the written permission of the State Tax Commissioner is prohibited by law.

KEY MAP



LOGAN COUNTY
STATE OF WEST VIRGINIA

Office of Assessor

DISTRICT

ISLAND CREEK

SHEET NO: 166-A

Date, Aerial Photography:
Photo No:

Date, Map: 9-29-86
Scale: 1"=100'