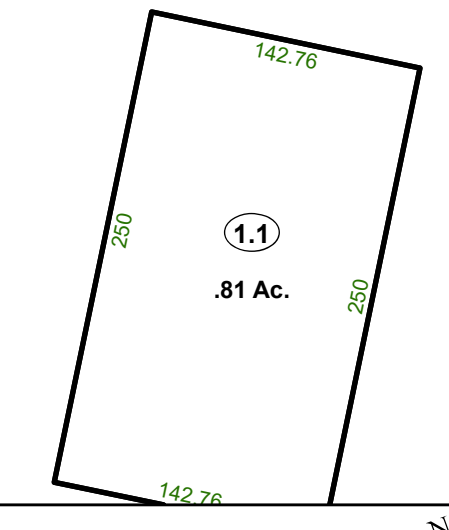


BILL ELLIS BRANCH

LOGAN DISTRICT
LOGAN CITY

1
229.74 Ac.

LOGAN DISTRICT
LOGAN CITY



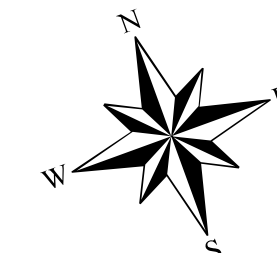
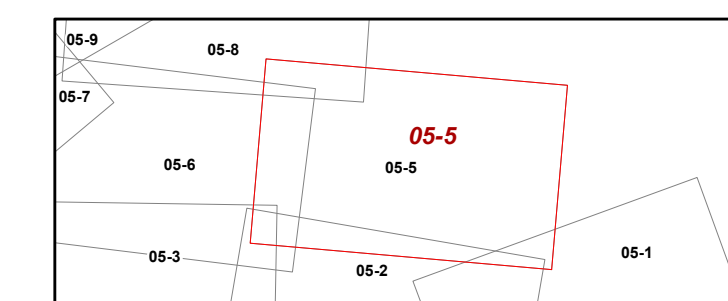
FOR TAX PURPOSES ONLY

Prepared By:
Glen D. "Houn' Dog" Adkins
Logan County, WV Tax Assessor
All finished tax maps created by provision of West Virginia law and are the property of the county assessors who created them. The reproduction, copying, distribution, sale or lease of such maps or copies thereof without the written permission of the respective county assessor is prohibited by law

Legend	
Property Line	Original Lot Line
Road Right of Way	Lot Number (15)
Corporation Line	Parcel Number (99)
District Line	Water
County Line	Railroad
Easement	

Coordinate System: NAD 1983 StatePlane West Virginia South FIPS 4702 Feet
Projection: Lambert Conformal Conic
Datum: North American 1983
False Easting: 1,968,500.0000
False Northing: 0.0000
Central Meridian: -81.0000
Standard Parallel 1: 37.4833
Standard Parallel 2: 38.8833
Latitude Of Origin: 37.0000
Units: Foot US

STATE OF WEST VIRGINIA
COUNTY OF LOGAN
Office of Assessor



logan Corp
Map: 5
Date, Aerial Photography: 2018
Date, Map: 11/19/2021
Scale: 1" = 100'
Date Last Revised: 5/4/2021 11:11:40 AM