

16\_0002

STANOLEA LN

SCHOOL ST

SUMMERS LN

CROSSROADS RD

07\_0005

DOH 16\_0004

MAIN ST

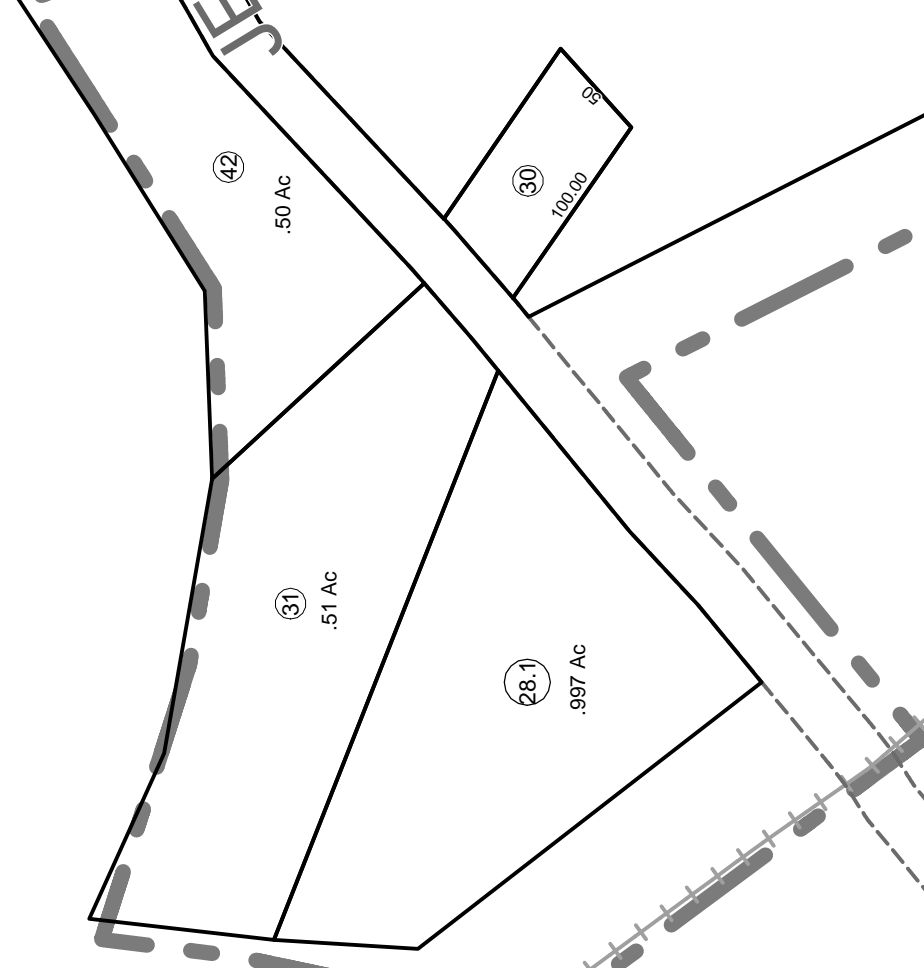
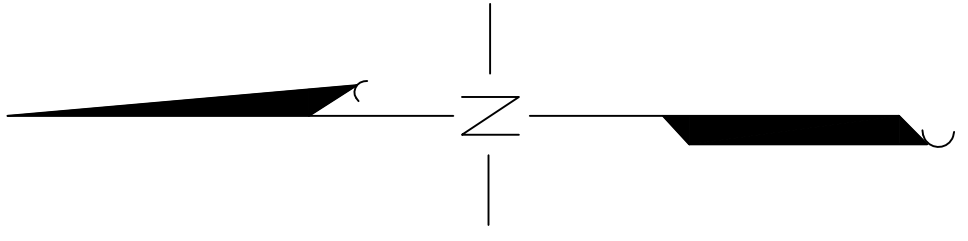
BAKER ST

LEE ST

WILSON ST

JESSESRUN

16\_0003



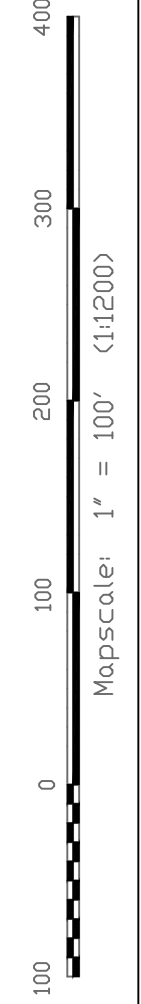
FAIRVIEW

BRENT LN

16\_0010

JESSESRUN RD  
MONARCH LN

16\_010A



THIS DOCUMENT IS A TAX MAP. It was compiled for purposes of taxation from available record evidence and has not been field verified. It is not a "valid" survey plat. The existence of data on this map does not imply any "official" status to such data by the WV State Tax Dept. and the Marion County Assessor's Office assume no liability that might result from use of this document.

LEGEND

Property Line	-----
Edge of roadway	-----
Corporation Line	-----
Hydrography	-----
Original Lot Line	-----
Lot number	(68)
Tax Parcel Number	(3)
Railroad	+++++

Office of the  
Marion County Assessor

Revision	Mapper	History	Date
1	NEW MAP	TN	OCT, 2016
2	NEW MAP	TN	JAN, 2018
3	NEW MAP	TN	OCT, 2018
4			
5			

All tax maps created under the provisions of reappraisal legislation are the property of the Marion County Reappraisal Program and the reproduction, copying, distribution or sale of such maps or any copies thereof without the written permission of the Marion County Assessor is prohibited by law. 03-14

Fairview  
07-04