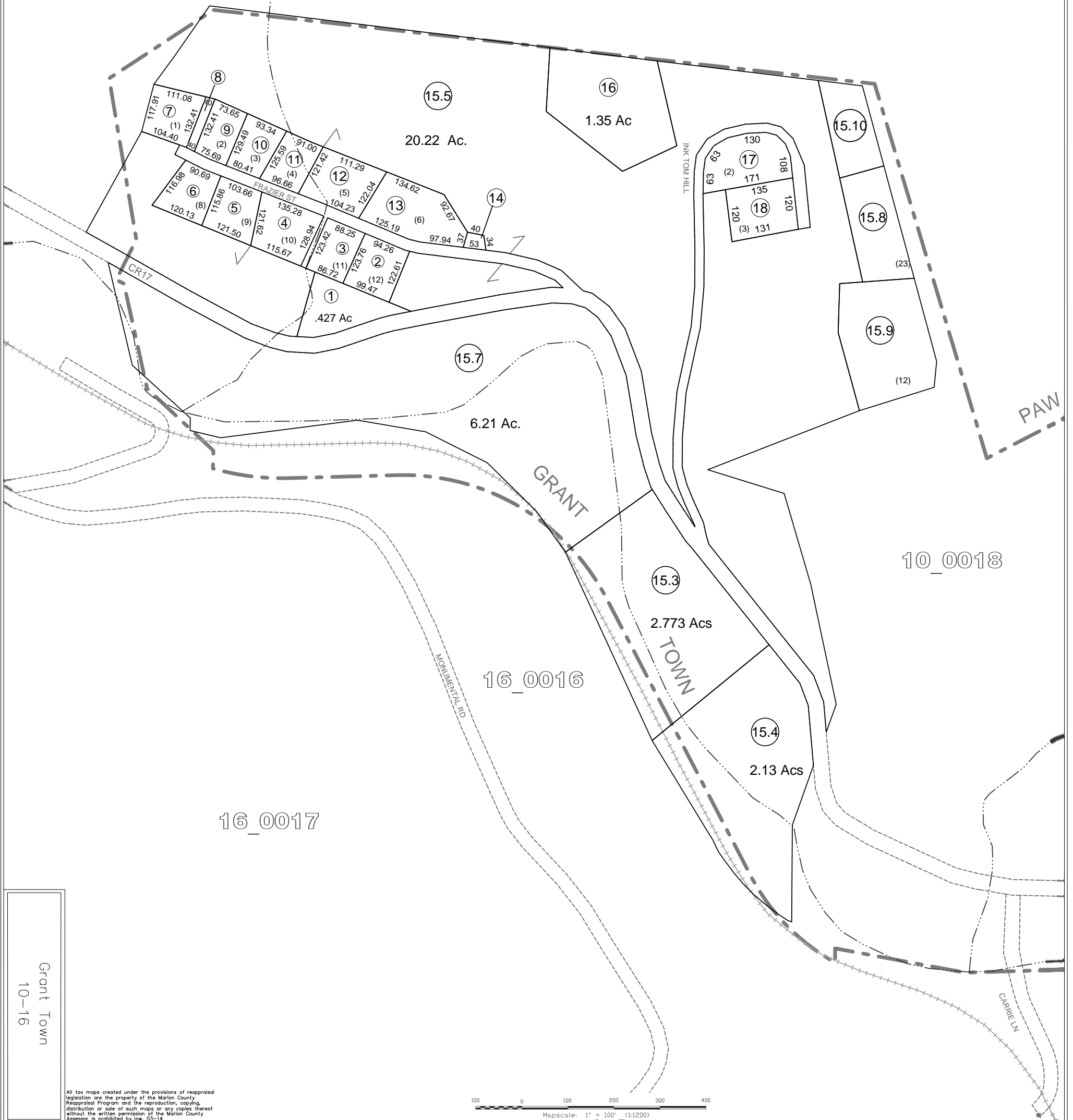
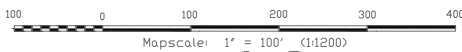


16\_0016



Grant Town  
10-16

All tax maps created under the provisions of reappraisal legislation are the property of the Marion County Reappraisal Program and the reproduction, copying, distribution or sale of such maps or any copies thereof without the written permission of the Marion County Assessor is prohibited by law. 03-14



LEGEND

Property Line	—————	Original Lot Line	- - - - -
Edge of roadway	-----	Lot number	Ⓢ
Corporation Line	-----	Tax Parcel Number	Ⓢ
Hydrography	~~~~~	Railroad	+++++

Office of the  
Marion County Assessor

Revision History	
Mapper	Date
NEW MAP TN	OCT, 2016

Grant Town  
10-16