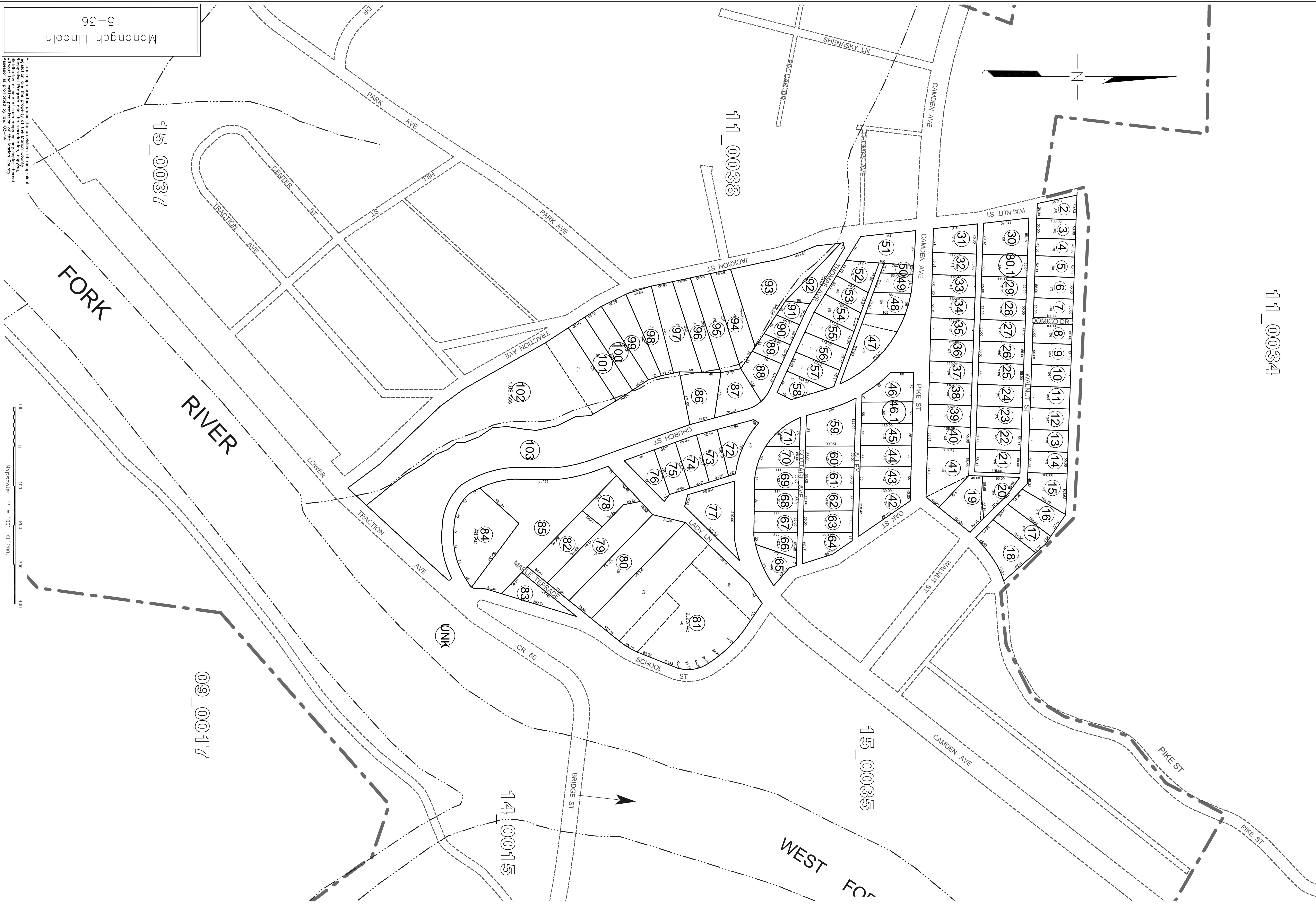
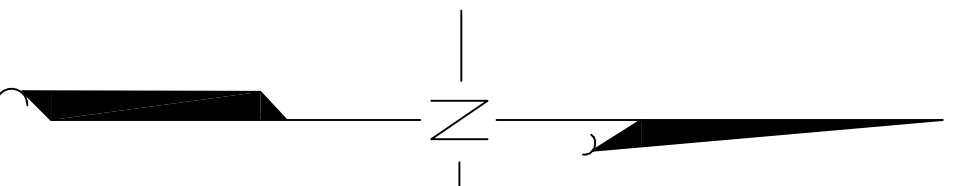


11\_0034



15-36  
Monongah Lincoln

All tax maps created under the provisions of reappropriated legislation are the property of the Marion County Assessor's Office. The existence of data on this map does not imply any "official" status to such data. The WV State Tax Dept. and the Marion County Assessor's Office assume no liability that might result from use of this document.

LEGEND

|                  |                   |
|------------------|-------------------|
| Property Line    | Original Lot Line |
| Edge of Roadway  | Lot number        |
| Corporation Line | Tax Parcel Number |
| Hydrography      | Roadway           |

Office of the  
Marion County Assessor

| Revision | History                |
|----------|------------------------|
| 1        | NEW MAP TN OCT 1, 2006 |
| 2        | NEW MAP TN OCT 1, 2006 |
| 3        | NEW MAP TN OCT 1, 2006 |
| 4        | NEW MAP TN OCT 1, 2006 |

Monongah Lincoln  
15-36