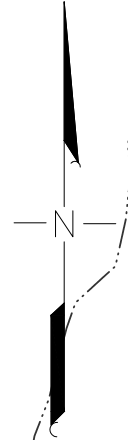


16_0031

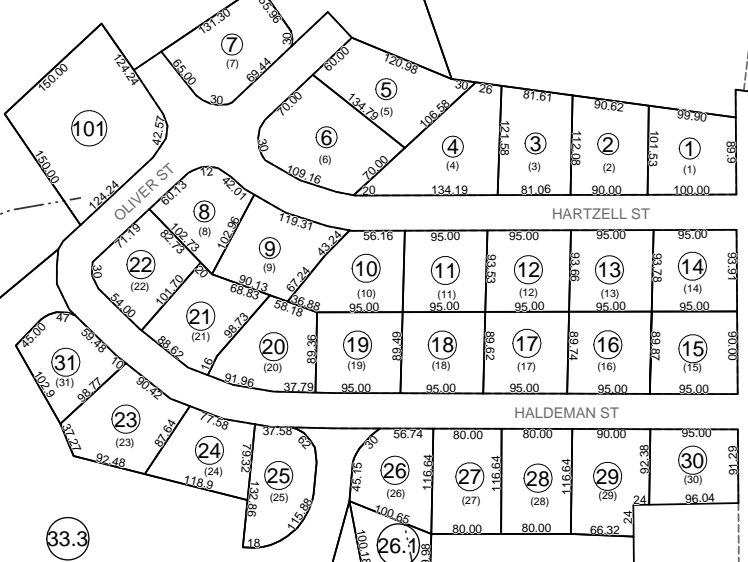
16_0031

RIVESVILLE



100
18.41 Ac
(B)

33
21.63 Acs



33.3
4.2 Acs

33.1
5.22 Acs

33.2
1 Ac

36.9

.31 Acs
36.2
3.11 Acs

36.4
.86 Ac

36.3
.7 Ac

36.8
.39 Ac

36.7
.39 Ac

36.5
.87 Ac

36.10
1.7 Acs

36.6
1.01 Acs

16_0040

17_0040

17_0039

PAW PAW CREEK

HILL ST

VIEW ST

HARTZELL ST

HALDEMAN ST

WILSON WAY

HILL ST

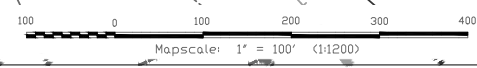
HAYHURST ST

MORGAN ST

US ROUTE 19

FIRST ST

CHESTNUT ST



THIS DOCUMENT IS A TAX MAP: It was compiled for purposes of taxation from available record evidence and has not been field verified. It is not a valid survey plat. The existence of data on this map does not imply any "official" status to such data. The WV State Tax Dept. and the Marion County Assessor's Office assume no liability that might result from use of this document.

LEGEND

Property Line	—————
Edge of roadway	- - - - -
Corporation Line	—————
Hydrography	- - - - -

Original Lot Line	—————
Lot number	(B)
Tax Parcel Number	(S)
Railroad	—————

Office of the
Marion County Assessor

Revision	History	Date
1	Mapper	
2	NEW MAP	TN OCT, 2016
3		
4		
5		

All tax maps created under the provisions of reappraisal legislation are the property of the Marion County Reappraisal Program and the reproduction, copying, distribution or sale of such maps or any copies thereof without the written permission of the Marion County Assessor is prohibited by law. 03-14