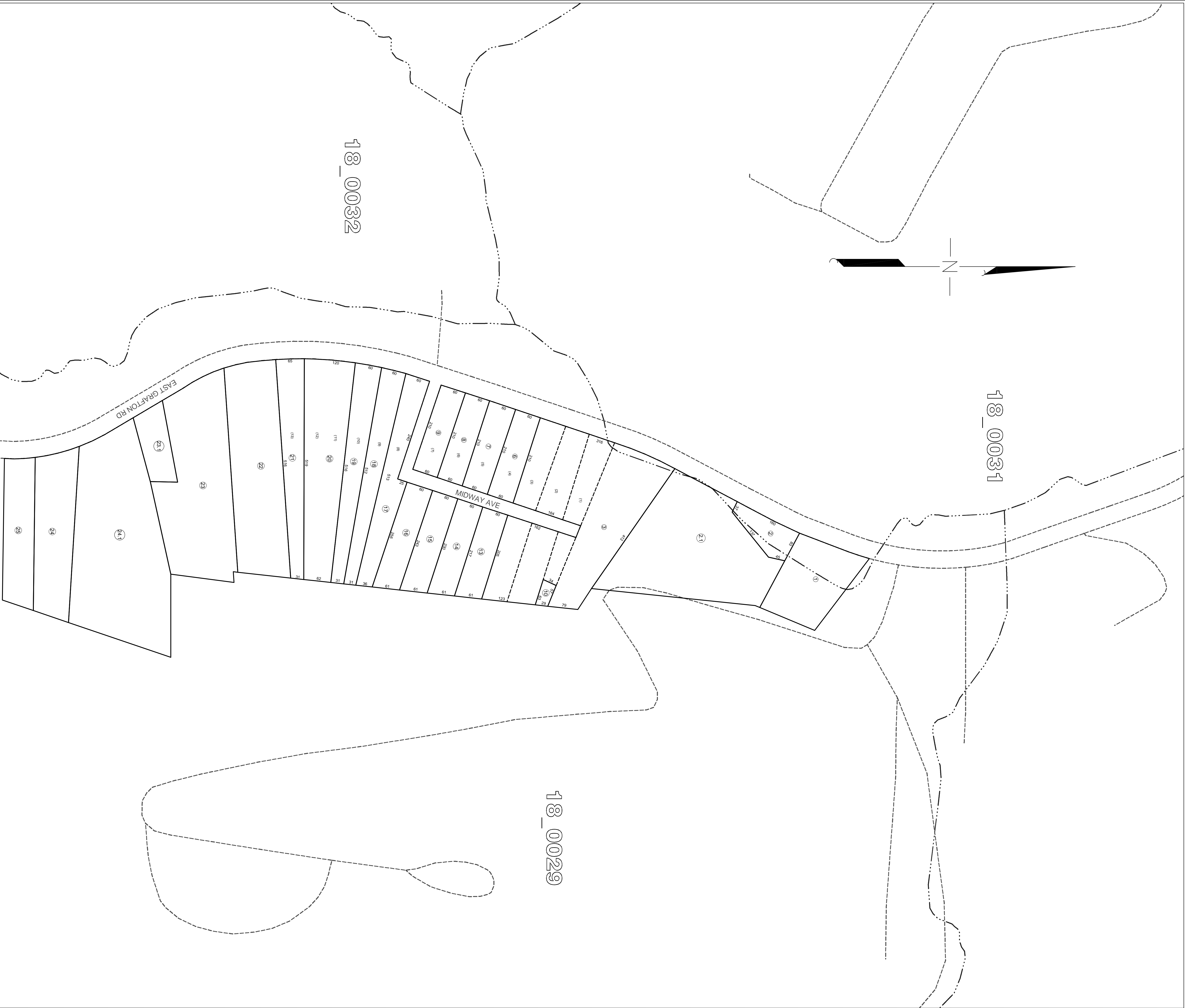


18_0031

18_0032

18_0029



All tax maps created under the provisions of appraisals legislation are the property of the Marion County Department of Assessment and are not to be reproduced, copied, or disseminated in any form or by any means without the written permission of the Marion County Assessor as provided by law. OS-14

Union District
18-30

THIS DOCUMENT IS A TAX MAP. It was compiled for purposes of taxation from records and information provided to the Assessor's Office by the Marion County Assessor's Office. The existence of data on this map does not imply any "official" status to such data. The WV State Tax Dept. and the Marion County Assessor's Office assume no liability that might result from use of this document.

LEGEND

Property Line	-----
Edge of roadway	-----
Corporation Line	-----
Hydrography	-----
Original Lot Line	-----
Lot Number	17
Tax Parcel Number	17
Railroad	+++++



Office of the
Marion County Assessor

Revision	History
1	NEW MAP IN
2	NEW MAP IN
3	NEW MAP IN
4	NEW MAP IN
5	NEW MAP IN

Union District
18-30